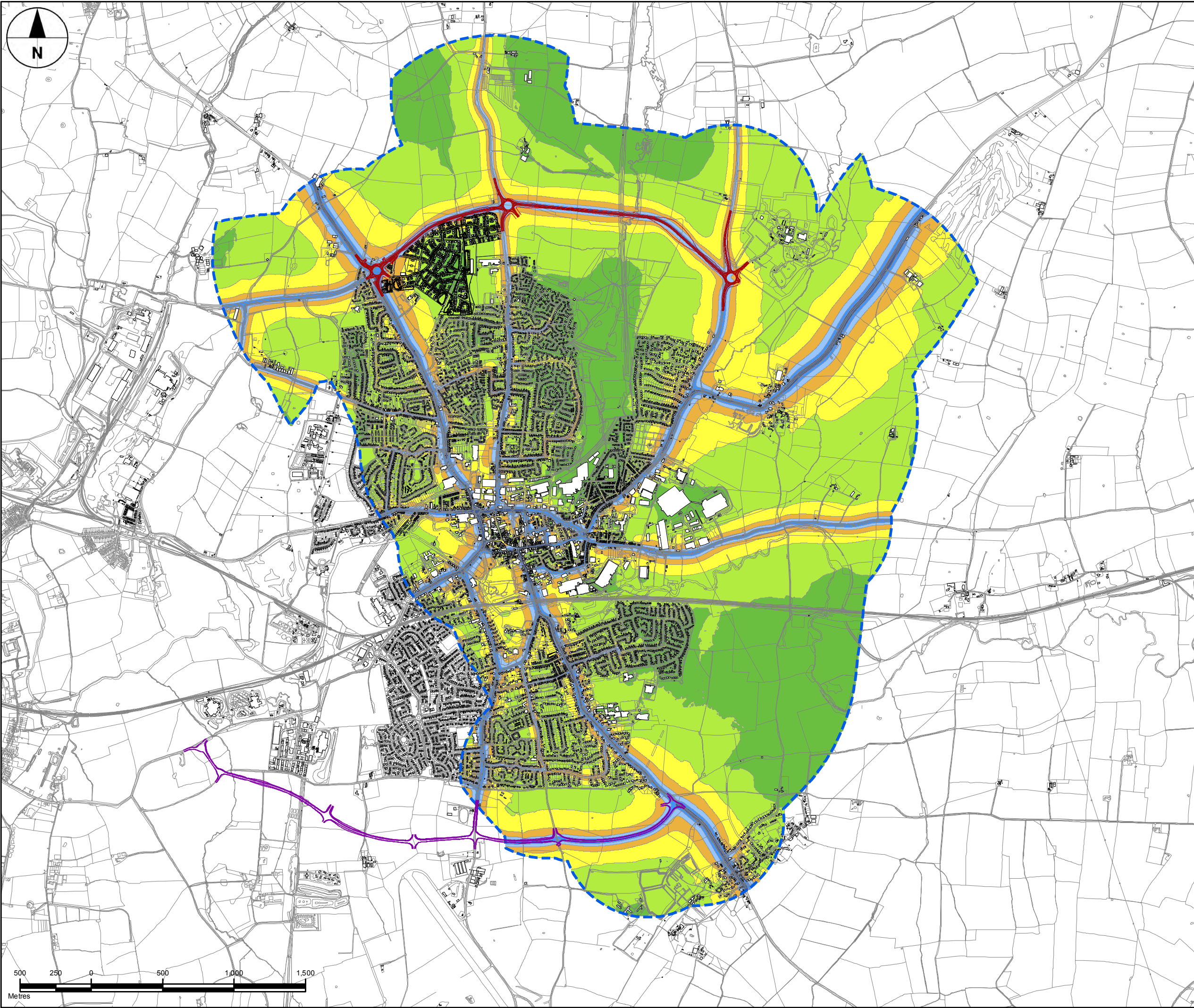

**FIGURE 11.4: NOISE - 2036 DO MINIMUM TRAFFIC NOISE
LEVELS**



KEY

- Scheme (in the vicinity of new housing development)
- Southern Link Road
- Proposed New Housing (Indicative Layout)
- 600m Noise Prediction Study Area

2036 Do-Minimum LA10, 18h dB at 4m (free-field)

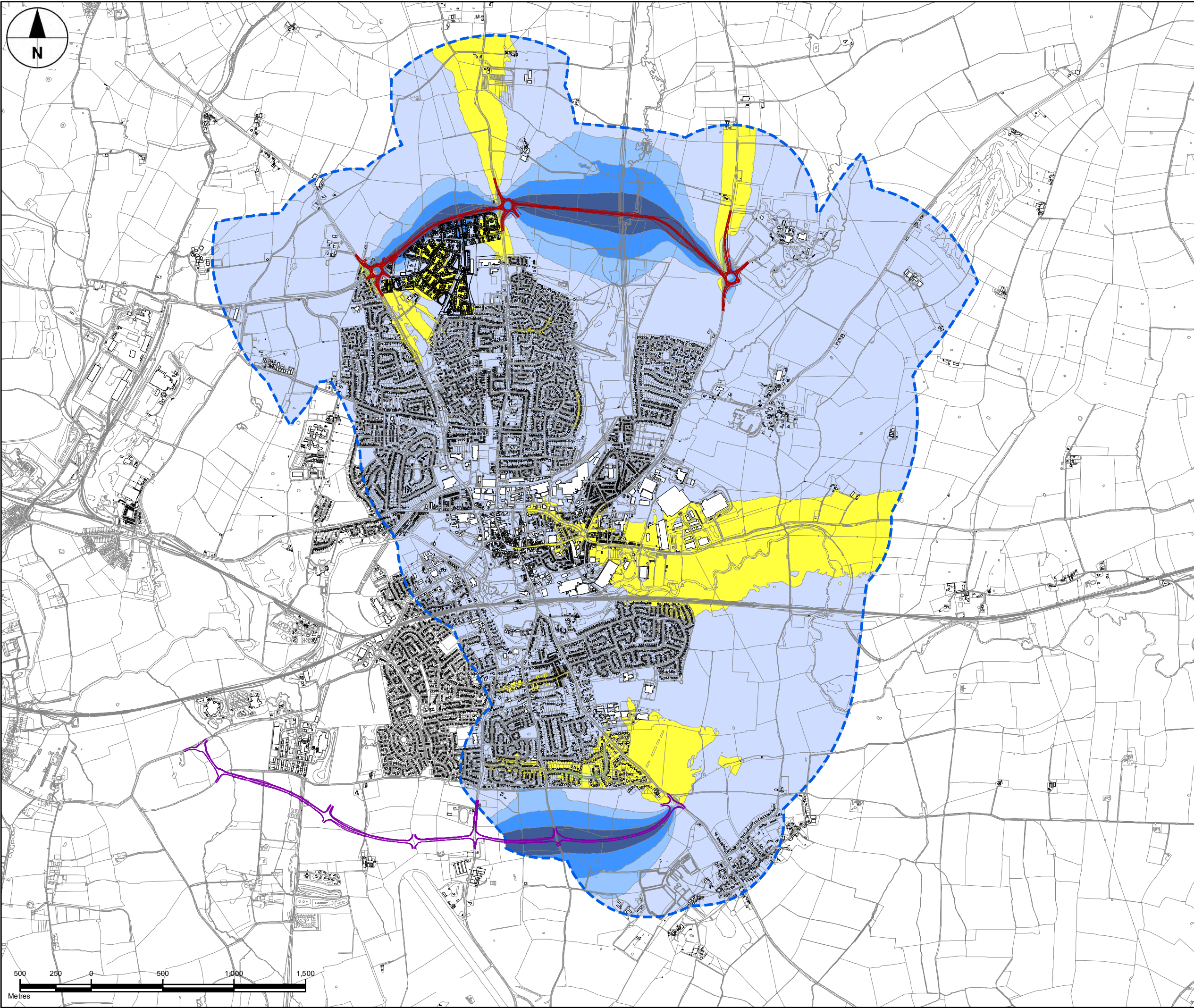
| | |
|--|-------------|
| | <=40 |
| | >40 to <=45 |
| | >45 to <=50 |
| | >50 to <=55 |
| | >55 to <=60 |
| | >60 to <=65 |
| | >65 to <=70 |
| | >70 |

PROJECT MANAGEMENT DETAILS

| | | |
|--|---------------------------|--------------|
| DESIGNED: GB/AP | CHECKED: SC | APPROVED: MS |
| INTERNAL PROJECT NUMBER | SCALE | |
| 60542201 | 1:25,000 | |
| STATUS | BS1192 SUITABILITY | |
| FOR INFORMATION | S2 | |
| SHEET TITLE | | |
| FIGURE 11.4 | | |
| 2036 DO-MINIMUM TRAFFIC NOISE LEVELS | | |
| DRAWING NUMBER | REV | |
| 60542201-ACM-EGN-GEN-GEN-ZZ-Z-DR-LE-0004 | P01 | |

This drawing has been prepared for the use of AECOM's client. It may not be used, modified, reproduced or relied upon by third parties, except as agreed by AECOM or as required by law. AECOM accepts no responsibility, and denies any liability whatsoever, to any party that uses or relies on this drawing without AECOM's express written consent. Do not scale this document. All measurements must be obtained from the stated dimensions.

FIGURE 11.5: NOISE - 2036 DO MINIMUM MINUS 2021 DM



KEY

- Scheme (in the vicinity of new housing development)
- Southern Link Road
- Proposed New Housing (Indicative Layout)
- 600m Noise Prediction Study Area

Do-Minimum Long Term Change 2036
 Do-Minimum Minus 2021 Do-Minimum
 LA10, 18h dB at 4m (free-field)

| | |
|--|--------------|
| | >=10.0 |
| | +5.0 to +9.9 |
| | +3.0 to +4.9 |
| | 0.0 to +2.9 |
| | <0 to -2.9 |
| | -3.0 to -4.9 |
| | -5.0 to -9.9 |
| | <= -10.0 |

PROJECT MANAGEMENT DETAILS

DESIGNED: GB/AP CHECKED: SC APPROVED: MS

INTERNAL PROJECT NUMBER **SCALE**
 60542201 1:25,000

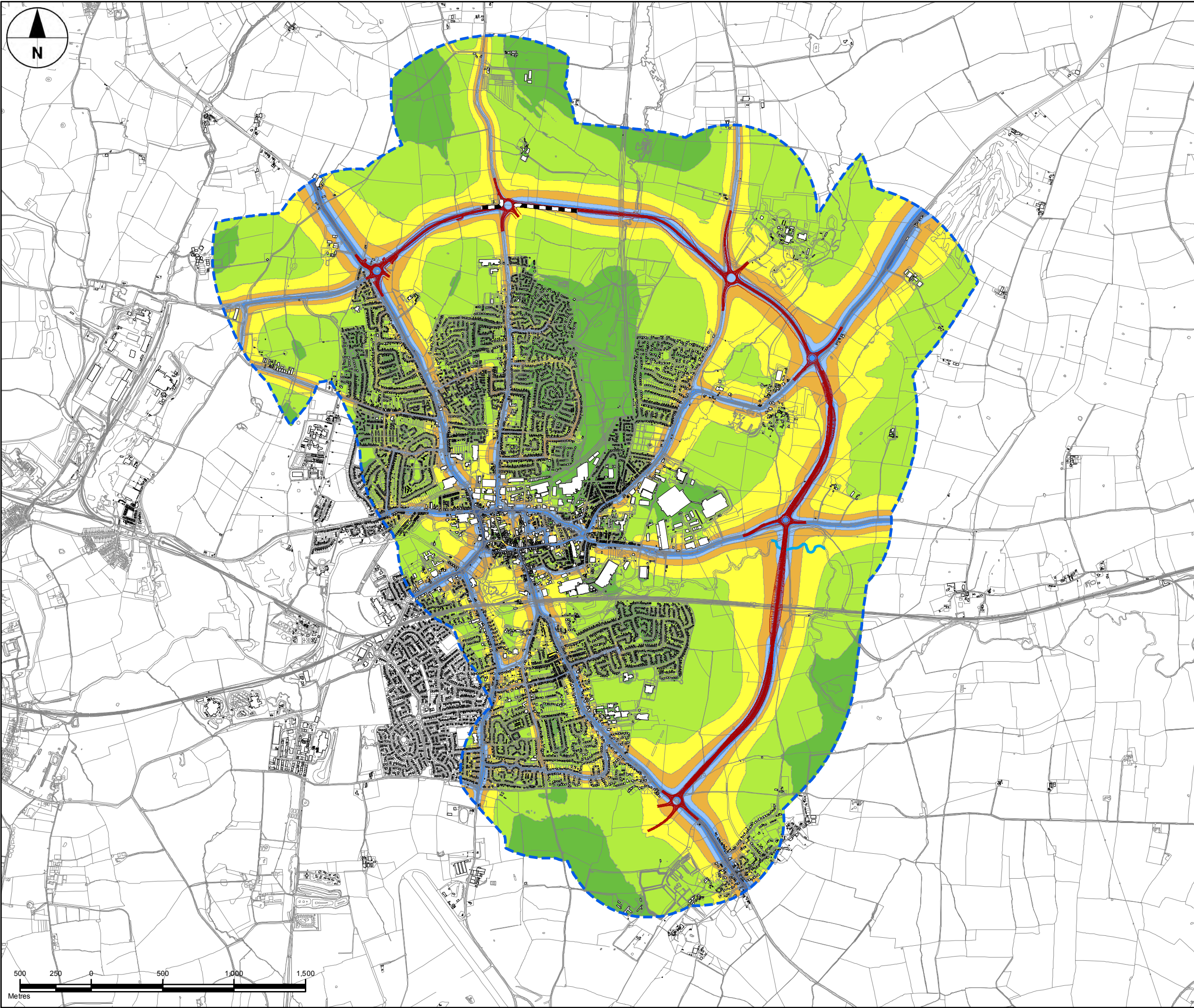
STATUS **BS1192 SUITABILITY**
 FOR INFORMATION S2

SHEET TITLE
 FIGURE 11.5
 2036 DO-MINIMUM MINUS 2021
 DO-MINIMUM: LONG TERM
 CHANGE IN TRAFFIC NOISE LEVELS

DRAWING NUMBER **REV**
 60542201-ACM-EGN-GEN-GEN-ZZ-Z-DR-LE-0005 P01

This drawing has been prepared for the use of AECOM's client. It may not be used, modified, reproduced or relied upon by third parties, except as agreed by AECOM or as required by law. AECOM accepts no responsibility, and denies any liability whatsoever, to any party that uses or relies on this drawing without AECOM's express written consent. Do not scale this document. All measurements must be obtained from the stated dimensions.

FIGURE 11.6: NOISE - 2021 DO SOMETHING



PROJECT
NORTH AND EAST MMDR

CLIENT
 **Leicestershire County Council**
 County Hall, Glenfield
 Leicester, LE3 8RA
 tel: +44 (0)116 2323232
 www.leicestershire.gov.uk

CONSULTANT
AECOM
 12 Regan Way
 Chetwynd Business Park
 Chilwell, Nottingham, NG9 6RZ
 tel: +44 (0)115 907 7000
 www.aecom.com

NOTES

1. ALL DIMENSIONS IN METRES UNLESS STATED OTHERWISE
2. THIS DRAWING IS BASED ON ORDNANCE SURVEY DATA

KEY

- Proposed Scheme
- River Channel Diversion
- Proposed Noise Barrier
- 600m Noise Prediction Study Area

2021 Do-Something LA10, 18h dB at 4m (free-field)

- >=40
- >40 to <=45
- >45 to <=50
- >50 to <=55
- >55 to <=60
- >60 to <=65
- >65 to <=70
- >70

PROJECT MANAGEMENT DETAILS

| | | |
|--|---------------------------|--------------|
| DESIGNED: GB/AP | CHECKED: SC | APPROVED: MS |
| INTERNAL PROJECT NUMBER | SCALE | |
| 60542201 | 1:25,000 | |
| STATUS | BS1192 SUITABILITY | |
| FOR INFORMATION | S2 | |
| SHEET TITLE | | |
| FIGURE 11.6 | | |
| 2021 DO-SOMETHING TRAFFIC NOISE LEVELS | | |
| DRAWING NUMBER | REV | |
| 60542201-ACM-EGN-GEN-GEN-ZZ-Z-DR-LE-0006 | P01 | |

This drawing has been prepared for the use of AECOM's client. It may not be used, modified, reproduced or relied upon by third parties, except as agreed by AECOM or as required by law. AECOM accepts no responsibility, and denies any liability whatsoever, to any party that uses or relies on this drawing without AECOM's express written consent. Do not scale this document. All measurements must be obtained from the stated dimensions.