



Melton Mowbray Eastern Distributor Road

Leicestershire County Council

Environmental Constraints Report

B2271702

February 2017



Melton Mowbray Eastern Distributor Road

Project no: B2271702
Document title: Melton Mowbray Eastern Distributor Road - Environmental Constraints Report
Document No.: B2271702/MMEDR/EnvConRep/001
Revision: 1
Date: 02.02.2017
Client name: Leicestershire County Council
Client no:
Project manager: Rahul Bagchi
Author: Roberta Millar
File name: \\GBBHM1-FIL002\Projects\Highways Projects\Melton Mowbray\7. Reports

Jacobs U.K. Limited

7th Floor, 2 Colmore Square
38 Colmore Circus, Queensway
Birmingham
B4 6BN
T +44 (0)121 700 1250
www.jacobs.com

© Copyright 2015 Jacobs U.K. Limited. The concepts and information contained in this document are the property of Jacobs. Use or copying of this document in whole or in part without the written permission of Jacobs constitutes an infringement of copyright.

Limitation: This report has been prepared on behalf of, and for the exclusive use of Jacobs' Client, and is subject to, and issued in accordance with, the provisions of the contract between Jacobs and the Client. Jacobs accepts no liability or responsibility whatsoever for, or in respect of, any use of, or reliance upon, this report by any third party.

Document history and status

Revision	Date	Description	By	Review	Approved
0	11/07/2016	Issued to Rahul Bagchi	Roberta Millar	Scott Wilson	Deryl Roberts
1	02/02/2017	Amended to include Option 3 and "Do Nothing". Additional Landscape, Ecology and Allocations assessments.	Roberta Millar	Scott Wilson	Deryl Roberts

Contents

Executive Summary	4
1. Data Limitations	5
2. Proposed Options	7
3. Landscape and Visual	8
3.1 Landscape and Visual Appraisal of Options on Melton Country Park	10
4. Ecology and Biodiversity	15
4.1 Biological Records Centre Assessment	19
5. Cultural Heritage	28
6. Water Resources	31
7. Public Access	33
8. Assessment of Local Plan Allocated Land	36
9. Conclusions and Recommendations	39

Executive Summary

Option 1, Option 2 and Option 3 would impact directly upon:

- Melton Country Park;
- Landscape Character Zone (Medium/High);
- Landscape Character Assessment Units;
- River Eye SSSI;
- Local Wildlife Site;
- Candidate Local Wildlife Site;
- Wildlife Corridors;
- Badger Setts;
- River Eye, Scalford Brook and Thorpe Brook;
- Flood Zone 2 & 3;
- National Cycle Route NR64;
- Public Rights of Way;
- One existing pipeline;
- Strategic Housing Allocations; and
- Local Green Space.

The 'Do Nothing' option would have no effects on the environmental designations mentioned above, including no effect upon the River Eye SSSI and no effect on the visual amenity of the views experienced from Melton Country Park. However, there will continue to be an increase in traffic flow throughout the busy town centre, with drivers experiencing congestion and more stressful conditions as a result. There may also be a decrease in air quality in the town centre due to higher volumes of slow traffic. This will be exacerbated by the three new Employment Sites development allocations within the town centre. There is currently no other way for vehicles travelling along the A606 to avoid passing directly through the Melton Mowbray Conservation Area, or passing other sensitive environmental features such as Listed Buildings.

1. Data Limitations

The data used in this report is subject to the following limitations:

- Environmental baseline data obtained by Jacobs is limited to datasets shown in the table below.
- Leicestershire County Council has provided Jacobs with some environmental baseline information, which has not been verified by Jacobs.
- No searches of additional databases, nor any site visits, have been undertaken other than a visit by the Landscape team for a targeted landscape assessment at Melton County Park.
- Data is subject to change and may be superseded following the data searches.

Designation	Source
Landscape and Visual	
Area of Outstanding Natural Beauty	MAGIC Website
National Park	MAGIC Website
Country Park	MAGIC Website
Tree Preservation Orders	Local Plan
Landscape Character Assessment Unit	Local Plan
Landscape Character Zone	Local Plan
Ecology and Biodiversity	
Biosphere Reserve	MAGIC Website
Site of Special Scientific Interest	MAGIC Website
Ancient Woodland	MAGIC Website
National Nature Reserve	MAGIC Website
Local Nature Reserve	MAGIC Website
Local Wildlife Site	Leicestershire County Council
Candidate/Potential Local Wildlife Site	Local Plan
Wildlife Corridor	Local Plan
RAMSAR	MAGIC Website
Special Protection Area	MAGIC Website
Special Area of Conservation	MAGIC Website
Nature Improvement Area	MAGIC Website
RSPB Important Bird Area	MAGIC Website
RSPB Nature Reserve	MAGIC Website
Biological Records	Biological Records Centre
Cultural Heritage	
World Heritage Site	MAGIC Website
Scheduled Monument	MAGIC Website
Registered Park and Garden	MAGIC Website
Registered Battlefield	MAGIC Website
Conservation Area	Leicestershire County Council
Listed Buildings	MAGIC Website
Water Resources	
Main Rivers	Environment Agency
Flood Zone 2 (1 in 1000)	Environment Agency
Flood Zone 3 (1 in 100)	Environment Agency
Source Protection Zone 1 (Inner Zone)	Environment Agency

Source Protection Zone 2 (Outer Zone)	Environment Agency
Source Protection Zone 3 (Total Catchment)	Environment Agency
Access	
National Trails / National Cycle Route	MAGIC Website
Footpaths	Local Plan
Bridleways	Local Plan
Existing Pipelines	Local Plan
Allocations	Local Plan
National Trust (Inalienable Land)	National Trust
Crown Land	Crown Estates

2. Proposed Options

Purpose of the Scheme

Leicestershire County Council are developing options for the proposed Melton Mowbray Eastern Distributor Road, connecting the A606 Nottingham Road to the A606 Burton Road. The creation of the Eastern Distributor Road would divert traffic flow away from Melton Mowbray town centre; improving transport links and relieving congestion along the current A606.

The strategy for the Eastern Distributor Road is to divert traffic away from more urbanised areas, where there are several environmental designations including the Melton Mowbray Conservation Area, which the existing A606 passes directly through.

Options 1, 2 and 3

There are three route options for the proposed bypass along with a 'Do Nothing' option. This document aims to identify the key environmental constraints per option, within a 1km buffer zone (see Figures 1 to 4).

The approximate length of each route option is as follows:

Option 1 – approximately 6.9km

Option 2 – approximately 7.4km

Option 3 – approximately 6.6km

'Do Nothing' option

The A606 runs directly through the Melton Mowbray Conservation Area. With this option, there will continue to be an increase in traffic flow throughout the busy town centre, with drivers experiencing congestion and more stressful conditions as a result. There may also be a decrease in air quality in the town centre due to higher volumes of slow traffic.

There is currently no other way for vehicles travelling along the A606 to avoid passing directly through the Melton Mowbray Conservation Area, or passing other sensitive environmental features such as Listed Buildings.

There are a total of 106 Listed Buildings within 1km of the town centre, with a total of 94 Listed Buildings within the Melton Mowbray Conservation Area alone (including 1x Grade I, 5x Grade II*, 88x Grade II).

Please refer to Figure 1 for details.

3. Landscape and Visual

Areas of Outstanding Natural Beauty (AONB)

Proposed Bypass Option 1:

- There are no AONB directly affected by the proposed bypass.
- There are no AONB within 1km of the proposed bypass.

Proposed Bypass Option 2:

- There are no AONB directly affected by the proposed bypass.
- There are no AONB within 1km of the proposed bypass.

Proposed Bypass Option 3:

- There are no AONB directly affected by the proposed bypass.
- There are no AONB within 1km of the proposed bypass.

National Parks (NP)

Proposed Bypass Option 1:

- There are no NP directly affected by the proposed bypass.
- There are no NP within 1km of the proposed bypass.

Proposed Bypass Option 2:

- There are no NP directly affected by the proposed bypass.
- There are no NP within 1km of the proposed bypass.

Proposed Bypass Option 3:

- There are no NP directly affected by the proposed bypass.
- There are no NP within 1km of the proposed bypass.

Country Parks (CP)

Proposed Bypass Option 1:

- The proposed bypass passes through the northern tip of Melton Country Park for approximately 100m.
- There are no other CP's within 1km of the proposed bypass.

Proposed Bypass Option 2:

- The proposed bypass passes through the northern tip of Melton Country Park for approximately 100m.
- There are no other CP's within 1km of the proposed bypass.

Proposed Bypass Option 3:

- The proposed bypass passes through the northern tip of Melton Country Park for approximately 100m.
- There are no other CP's within 1km of the proposed bypass.

Landscape Character Zones

Proposed Bypass Option 1:

- The proposed bypass passes through a medium/high Landscape Character Zone for approximately 6.7km (route is 6.9km in length).

Proposed Bypass Option 2:

- The proposed bypass passes through a medium/high Landscape Character Zone for approximately 6.4km (route is 7.4km in length).

Proposed Bypass Option 3:

- The proposed bypass passes through a medium/high Landscape Character Zone for approximately 6.5km (route is 6.6km in length).

Landscape Character Assessment Units (LCU)

Proposed Bypass Option 1:

- The proposed bypass passes through LCU15 for approximately 4.3km, LCU13 for approximately 1.3km, LCU10 for approximately 1.2km and LCU8 for approximately 100m.

Proposed Bypass Option 2:

- The proposed bypass passes through LCU15 for approximately 4.1km, LCU13 for approximately 1.2km, LCU10 for approximately 1.9km and LCU8 for approximately 200m.

Proposed Bypass Option 3:

- The proposed bypass passes through LCU15 for approximately 6.5km and LCU8 for approximately 100m.

Tree Preservation Orders (TPO)

Proposed Bypass Option 1:

- There are no TPOs directly affected by the proposed bypass.
- There are 106 TPOs within 1km of the proposed bypass.

Proposed Bypass Option 2:

- There are no TPOs directly affected by the proposed bypass.
- There are 105 TPOs within 1km of the proposed bypass.

Proposed Bypass Option 3:

- There are no TPOs directly affected by the proposed bypass.
- There are 118 TPOs within 1km of the proposed bypass.

3.1 Landscape and Visual Appraisal of Options on Melton Country Park

3.1.1 Introduction

This high-level appraisal has been undertaken by Jacobs landscape architects, on behalf of Leicestershire County Council. The appraisal considers the main landscape and visual issues on Melton Country Park, in relation to the route options for the proposed Melton Mowbray Eastern Distributor Road (EDR).

A site visit was undertaken on 11 January 2017 by two landscape architects to undertake a landscape and visual appraisal. Jacobs have provided LCC with early findings of their appraisal to allow feedback to be included in the appraisal.

3.1.2 Existing Context

This section considers the existing landscape and visual context of the route alignment options and environs. The site appraisal has focussed on the northern section of the Country Park where the proposed three route options are closest and are likely to result in the greatest degree of change for visitors to the Country Park. The visual appraisal also considered the potential effect on views to the north and east of the Country Park.

Landscape Character

The published national and local landscape character assessments give descriptions of the typical landscape character types within the study area. Within Natural England's National Character Area Profile: 74 Leicestershire and Nottinghamshire Wolds, the landscape of Melton Country Park and the surrounding area is described as a typical Wolds landscape, defined in more detail within Leicestershire and Rutland Landscape and Woodland Strategy 2001, as "a rolling landscape drained by numerous stream valleys with mixed farmland – arable on ridges, pasture in valleys". The Wolds extend northwards from Melton Mowbray and form a watershed to the River Wreake and River Eye which flow from east to west through the centre of Melton Mowbray.

The Melton Borough Landscape & Historic Urban Character Assessment Report, ADAS March 2006, broadly defines Melton Borough as a rolling landscape with little woodland or parkland, generally indistinct lowland ridge and valley. Melton Mowbray is the main urban and industrial influence, with the surrounding area characterised by small to medium sized villages and individual farms distributed through the Borough.

Within the Melton Borough Landscape & Historic Character Assessment Report, the Country Park falls within LCA 21 Melton Mowbray, although it has the typical rolling landscape characteristics of LCA 20 Melton Fringes, directly to the north. Distinct characteristics are described as a rolling landscape of fields and hedges, mixed pasture and arable land and a clear distinction between urban edge and countryside with housing estates remaining unscreened. It was noted on the site visit that the landscape within the Country Park and the surrounding area reflects the landscape characteristics cited in this published source (see Figure 6).

Strategic proposals for Melton Country Park are included within the 6Cs¹ Green Infrastructure, East Midland Regional Plan 2010, which is recognised as part of a 'network of multi-functional greenspace which sit within, and contribute to, the type of high quality natural and built environment required to deliver sustainable communities'. The Green Infrastructure plan recognises the importance of the connectivity of these greenspaces by 'delivering, protecting and enhancing these networks' and by 'creation of new assets to link with river corridors, waterways, woodlands, nature reserves, urban greenspace, historic sites and other existing assets'.

The northern part of the Country Park comprises areas of open managed grassland, rough marshy grassland and ponds and substantial areas of maturing native woodland plantation. Established vegetation along the dismantled railway embankment, which runs broadly north to south through the Country Park, provides a dense

¹ The 6Cs Green Infrastructure Strategy provides an overarching strategic framework to 2026 for Green Infrastructure (GI) planning, investment and delivery. The three city councils and three county councils (known collectively as the 6Cs) are Derby City Council, Derbyshire County Council, Leicester City Council, Leicestershire County Council, Nottingham City Council and Nottinghamshire County Council.

belt of mature vegetation. The northern boundary of the country park to the east of the embankment is defined by a tall mature hedgerow. The hedgerow boundary to the west of the embankment is lower, and shrubs are intermittent.

Visual Appraisal

Visually, the centre of the Country Park is well-contained with outward visibility generally restricted to its immediate surroundings. The woodland plantations restrict wider visibility. Within the north part of the Country Park, views from the eastern edge are more open allowing medium distance views to the east. In the southern part of the Country Park, outward views are contained by woodland plantations, and to a lesser extent, residential estates (please see Figure 7 - Landscape Constraints and Viewpoint Locations, which shows existing vegetation and Figure 8 - Panorama Viewpoints Sheets 1 and 2, which show views outward from the Country Park).

Within the Country Park the areas within the valley floor along Scalford Brook are more open. The many internal footpaths provide routes along the valley floor and other routes that gently rise up towards the eastern and western boundaries. These higher elevations provide attractive views both back into the Country Park and outwards to the north and east into the generally open arable landscape, and to the east, across to Thorpe Arnold and the eastern residential areas of Melton Mowbray. The setting and slightly elevated views it provides adds to the quality of the experience for those using the Country Park.

A description of views is set out below:

- To the north – views from the Country Park are heavily restricted by plantation woodland and mature hedgerows, although from the valley floor near the ponds the intermittent hedgerow boundary provides open framed views of the fields beyond;
- To the east – from the Country Park footpaths along the elevated eastern boundary, views over the trimmed hedgerow are open providing distant views of farms, villages and the eastern development of Melton Mowbray;
- To the west – plantation woodland along the Country Park boundary prevents views out; and
- To the south – views are confined to within the Country Park by woodland plantation and the rising topography.

Following the site survey, viewpoint locations 1 to 4 (as shown on Figure 8) have been identified where the route options would be most prominent in views from the Country Park and the greatest change to existing views is likely to occur. A description of the viewpoint locations is set out below:

- Viewpoint 1 – View north-west, north and east from a footpath in the north-east corner of the Country Park. Views to the north-west are open extending to approximately 1.5km across the gently rolling topography. Views north are open but short distance as the gently rising topography shortens views. Views to the north-east and east are extensive towards Thorpe Arnold and the A607 and extend to approximately 1.5km to the east across the gently rolling topography.
- Viewpoint 2 – View north from Jubilee Way, a long distance footpath that runs through the Country Park and continues north along Scalford Brook. Views are filtered by hedgerow vegetation with a narrow gap in the hedgerow at the footpath gate. Views beyond the Country Park are short distance, extending approximately 300m to nearby vegetation along Scalford Brook.
- Viewpoint 3 – View north from the dismantled railway embankment within the Country Park boundary where the route options would intersect the embankment. There is no formal footpath here although it is a well-used informal route. Views are open and elevated extending approximately 1.5km.
- Viewpoint 4 – View north from within the Country Park, from the southern shore of the northern-most pond. Gaps within the vegetation on the northern boundary of the county park allow filtered outward views to the agricultural land extending approximately 600m.

Visual Effects of the Proposed Route Options

The three proposed route options, where the Melton Mowbray EDR passes the northern edge of the Country Park, follow a very similar east/west alignment (see Figure 1). To the north-east of the Country Park, Option 3 diverges from Option 1 and Option 2 and heads in a south-easterly/north-westerly direction west of Thorpe Arnold. Option 1 and Option 2 continue east/west passing Thorpe Arnold to the east. For this visual appraisal Options 1 and Option 2 have been considered together.

Option 1 and Option 2

From Viewpoint 1, Option 1 and Option 2 would be approximately 75m from the nearest point of the Country Park in a shallow cutting and would be visible for approximately 1.5km to the east from the Country Park where the route options climb the elevated ground north and west of Thorpe Arnold.

From Viewpoint 2, on the Jubilee Way, views towards Option 1 and Option 2 would be filtered by hedgerow vegetation and framed by surrounding hedgerows. The route options would be on embankment and approximately 100m to the north.

From Viewpoint 3, the location of the view would be completely altered by Option 1 and Option 2 as the path would be on the alignment. Rising topography and vegetation along the embankment would provide some filtering of views to the east and west.

From Viewpoint 4, views within the Country Park would be filtered by vegetation on the Country Park boundary towards Option 1 and Option 2 on low embankment approximately 400m to the north.

Option 3

From Viewpoint 1, Option 3 would be in deeper cutting and closer to the Country Park's eastern boundary. Option 3 would become screened from view sooner by the falling topography west of Thorpe Arnold where it follows lower lying land towards Melton Spinney Road.

From Viewpoint 2, on the Jubilee Way, views to Option 3 would be filtered in winter by hedgerow vegetation with a narrow gap in the hedgerow at the footpath gate and on slightly higher embankment than Option 1 and Option 2 and approximately 90m to the north.

From Viewpoint 3, the location of the view would be completely altered by Option 3 as the path would be on the alignment. Rising topography and vegetation along the embankment would provide some filtering of views to the east and west.

From Viewpoint 4, views within the Country Park would be filtered by vegetation on the Country Park boundary towards Option 3, approximately 400m to the north on low embankment between existing groups of plantation woodland.

3.1.3 Summary of Effects

The greatest visual changes would occur during the construction stage, due to construction phase activities, large earthworks operations and removal of hedgerows. Adverse changes to views would continue during the operational stage through the introduction of a new road into the rural landscape and views of moving traffic and headlights in night-time views (although the Country Park is likely to be used infrequently during hours of darkness). Without planting mitigation, views of the new road and traffic would remain partially screened where in cutting.

Comparison of the Route Options

From viewpoint 1, all three route options would be in close proximity to the Country Park and would be equally visible. The route options would be in cutting although Option 3 would be in a deeper cutting, increasing the screening of moving vehicles. Option 1 and Option 2 would continue to be visible for approximately 1.5km to the

east where the route options climb the elevated ground north and west of Thorpe Arnold, whereas, Option 3 would become screened from view sooner by the falling topography west of Thorpe Arnold. Due to the close proximity of the alignments the three route options would adversely affect the attractiveness of existing views but only from the very edge of the Country Park. In views further to the south the route options would be more screened by falling topography west of Thorpe Arnold.

To the north of the Country Park, the three route options continue in an east/west direction on the same alignment, differing only slightly by the varying heights of embankment or depths of cutting. Due to the close proximity of the route options, the views from viewpoints 2, 3 and 4 would be similarly adversely affected.

Design Opportunities

The following opportunities have been identified to reduce the potential adverse landscape and visual effects of the route options. A balance needs to be made between screening the road and traffic and restricting attractive existing views over the countryside beyond the proposed routes (see Figure 7, showing opportunities for reducing the visual effects from the Country Park).

- Additional planting within the Country Park's northern boundary to strengthen existing hedgerows and extend woodland plantation.
- Implement a regime of advance planting along the Country Park's northern boundary to help offset disruption caused by construction activities.
- The route options would sever the fields along the northern boundary leaving small parcels of land, which would no longer be of any viable agricultural use. These parcels could be acquired to extend the Country Park northwards. The additional land would allow comprehensive landscape mitigation measures to be implemented, which could include provision of a false cutting for embanked sections of the new road to provide visual and noise mitigation and a substantial planting belt as well as new footpath routes.
- Provision of comprehensive roadside mitigation in the form of native planting to reduce visibility and integrate with the existing landscape character. A balance would need to be made between screening and sympathetic integration of the planting within the existing landscape character.

Summary of effects with Mitigation

Generally, within the Country Park, additional planting along the northern boundary would, over time, reduce visibility of the three route options. However, views of screen planting are considered preferable to views of moving traffic.

The extensive views north and east from Viewpoint 1 add to the quality of the experience for users of the Country Park. Therefore, it is considered that Option 3 would result in the least level of landscape and visual impact on the Country Park as it is located in deeper cutting near the north-western corner and would be screened earlier by falling topography towards Melton Spinney Road, potentially requiring less screening within the locally open arable landscape. Option 1 and Option 2 would be located in a shallower cutting and would be visible for a greater distance east where the topography rises north of Thorpe Arnold.

From Viewpoints 2, 3 and 4, options for reducing the visibility of the embankments and moving traffic through screen planting or extended planting would not unduly affect the attractiveness of these views, due to the short distance of views and intervening vegetation

Designs enabling the Jubilee Way to cross the route options would need further consideration as to how views experienced by walkers would be changed. This issue has not been considered in this report.

From Viewpoint 3, the informal path providing this view would be terminated under all route options. Additional planting along the top of the embankment should be considered as part of the scheme proposals to screen views for walkers further south on the elevated embankment of the Jubilee Way.

3.1.4 Residual Effects

Road embankments and moving traffic would be visible from the north of the Country Park at the viewpoints identified within this appraisal whilst screen planting establishes. Overall, by year 15 the adverse effects could be adequately mitigated through careful placement of screening planting along the northern boundary and by considering the opportunities identified earlier. Screen planting along the route option alignments to the north-east of the Country Park, through careful design, could maintain the extensive views whilst adequately screening the selected alignment.

3.1.5 References

National Character Area Profile 74, Natural England, 19/07/2012

The Melton Borough Landscape & Historic Urban Character Assessment Report. ADAS, March 2006,

East Midland Regional Plan, (2009) 6Cs Green Infrastructure Strategy Executive Summary. Chris Blandford Associates 2010

4. Ecology and Biodiversity

Ramsar Sites

Proposed Bypass Option 1:

- There are no Ramsar sites directly affected by the proposed bypass.
- There are no Ramsar sites within 1km of the proposed bypass.

Proposed Bypass Option 2:

- There are no Ramsar sites directly affected by the proposed bypass.
- There are no Ramsar sites within 1km of the proposed bypass.

Proposed Bypass Option 3:

- There are no Ramsar sites directly affected by the proposed bypass.
- There are no Ramsar sites within 1km of the proposed bypass.

Special Protection Areas (SPA)

Proposed Bypass Option 1:

- There are no SPA directly affected by the proposed bypass.
- There are no SPA within 1km of the proposed bypass.

Proposed Bypass Option 2:

- There are no SPA directly affected by the proposed bypass.
- There are no SPA within 1km of the proposed bypass.

Proposed Bypass Option 3:

- There are no SPA directly affected by the proposed bypass.
- There are no SPA within 1km of the proposed bypass.

Special Area of Conservation (SAC)

Proposed Bypass Option 1:

- There are no SAC directly affected by the proposed bypass.
- There are no SAC within 1km of the proposed bypass.

Proposed Bypass Option 2:

- There are no SAC directly affected by the proposed bypass.
- There are no SAC within 1km of the proposed bypass.

Proposed Bypass Option3:

- There are no SAC directly affected by the proposed bypass.
- There are no SAC within 1km of the proposed bypass.

Site of Special Scientific Interest (SSSI)

Proposed Bypass Option 1:

- The proposed bypass passes through a short section of the River Eye SSSI.
- Additional sections of the River Eye SSSI are also located within 1km of the proposed bypass.

Proposed Bypass Option 2:

- The proposed bypass passes through a short section of the River Eye SSSI.
- Additional sections of the River Eye SSSI are also located within 1km of the proposed bypass.

Proposed Bypass Option 3:

- The proposed bypass passes through a short section of the River Eye SSSI.
- Additional sections of the River Eye SSSI are also located within 1km of the proposed bypass.

National Nature Reserve (NNR)

Proposed Bypass Option 1:

- There are no NNR directly affected by the proposed bypass.
- There are no NNR within 1km of the proposed bypass.

Proposed Bypass Option 2:

- There are no NNR directly affected by the proposed bypass.
- There are no NNR within 1km of the proposed bypass.

Proposed Bypass Option 3:

- There are no NNR directly affected by the proposed bypass.
- There are no NNR within 1km of the proposed bypass.

Local Nature Reserve (LNR)

Proposed Bypass Option 1:

- There are no LNR directly affected by the proposed bypass.
- There are no LNR within 1km of the proposed bypass.

Proposed Bypass Option 2:

- There are no LNR directly affected by the proposed bypass.
- There are no LNR within 1km of the proposed bypass.

Proposed Bypass Option 3:

- There are no LNR directly affected by the proposed bypass.
- There are no LNR within 1km of the proposed bypass.

Local Wildlife Site (LWS)

Proposed Bypass Option 1:

- The proposed bypass passes through the northern tip of a LWS for approximately 100m.
- There is one LWS approximately 100m northwest, one LWS approximately 500m north, one LWS approximately 550m east, one LWS approximately 600m east, and one LWS approximately 750m west of the proposed bypass.

Proposed Bypass Option 2:

- The proposed bypass passes through the northern tip of a LWS for approximately 100m.
- There is one LWS approximately 100m northwest, one LWS approximately 500m north, one LWS approximately 550m east, one LWS approximately 50m east and one LWS approximately 750m west of the proposed bypass.

Proposed Bypass Option 3:

- The proposed bypass passes through the northern tip of a LWS for approximately 100m, and the western edge of a second LWS.
- There is one LWS approximately 100m northwest, one LWS approximately 500m north and one LWS approximately 900m east of the proposed bypass.

Candidate Local Wildlife Site (cLWS)

Proposed Bypass Option 1:

- The bypass directly crosses approximately 100m of Melton Bingham Disused Railway Line cLWS, and a small cLWS near Nottingham Road.
- There is one cLWS approximately 100m south, and one cLWS approximately 1km northeast of the proposed bypass.

Proposed Bypass Option 2:

- The bypass directly crosses approximately 100m of Melton Bingham Disused Railway Line cLWS, and a small cLWS near Nottingham Road.
- There is one cLWS approximately 100m south, and one cLWS approximately 1km northeast of the proposed bypass.

Proposed Bypass Option 3:

- The bypass directly crosses approximately 100m of Melton Bingham Disused Railway Line cLWS, and a small cLWS near Nottingham Road.
- There is one cLWS approximately 100m south, and one cLWS approximately 1.2km northeast of the proposed bypass.

Wildlife Corridor

Proposed Bypass Option 1:

- The bypass directly crosses six wildlife corridors.
- There are several additional wildlife corridors within 1km of the proposed bypass.

Proposed Bypass Option 2:

- The bypass directly crosses six wildlife corridors.

- There are several additional wildlife corridors within 1km of the proposed bypass.

Proposed Bypass Option 3:

- The bypass directly crosses six wildlife corridors.
- There are several additional wildlife corridors within 1km of the proposed bypass.

Ancient Woodland (AW)

Proposed Bypass Option 1:

- There are no AW directly affected by the proposed bypass.
- There are no AW within 1km of the proposed bypass.

Proposed Bypass Option 2:

- There are no AW directly affected by the proposed bypass.
- There are no AW within 1km of the proposed bypass.

Proposed Bypass Option 3:

- There are no AW directly affected by the proposed bypass.
- There are no AW within 1km of the proposed bypass.

Nature Improvement Areas (NIA)

Proposed Bypass Option 1:

- There are no NIA directly affected by the proposed bypass.
- There are no NIA within 1km of the proposed bypass.

Proposed Bypass Option 2:

- There are no NIA directly affected by the proposed bypass.
- There are no NIA within 1km of the proposed bypass.

Proposed Bypass Option 3:

- There are no NIA directly affected by the proposed bypass.
- There are no NIA within 1km of the proposed bypass.

Royal Society for the Protection of Birds (RSPB) Sites

Proposed Bypass Option 1:

- There are no RSPB sites directly affected by the proposed bypass.
- There are no RSPB sites within 1km of the proposed bypass.

Proposed Bypass Option 2:

- There are no RSPB sites directly affected by the proposed bypass.
- There are no RSPB sites within 1km of the proposed bypass.

Proposed Bypass Option 3:

- There are no RSPB sites directly affected by the proposed bypass.
- There are no RSPB sites within 1km of the proposed bypass.

4.1 Biological Records Centre Assessment

4.1.1 Desk Study Methods

A variety of web-based resources were consulted to identify statutory designated sites, protected species records and potentially important habitats:

- Google Earth;
- Multi-agency Geographic Information for the Countryside (MAGIC) <http://www.magic.gov.uk/>;
- Leicestershire and Rutland Environment Records Centre (LRERC); and
- National Biodiversity Network (NBN Gateway) <https://data.nbn.org.uk/>.

A request for biological information, including records of protected species and species of conservation importance within 2km (extending 5km for bats records) of route Options 1, 2 and 3 was submitted to the LRERC in January 2017.

Senior Planning Ecologist, Kirsty Gamble, was also contacted for ecology advice as part of the desk study.

4.1.2 Desk Study Results

Statutory and Non-Statutory Sites

Statutory Sites

One statutory designated site, the River Eye Site of Special Scientific Interest (SSSI), was identified within 2km of all three route Options (See Table 4.1). Option 1 crosses a short section of the SSSI at approximate Ordnance Survey (OS) grid reference SK 77215 19307, in addition the route runs parallel to the river, for approximately 1.2km (approximately 250m west of the SSSI) where it runs in a north-south direction. Option 2 crosses a short section of the SSSI at approximate OS grid reference SK 77471 18053, in addition the route runs parallel to the river for 1.2km (approximately 250m east of the SSSI) where it runs in a north-south direction and for 600m (approximately 400m west from the SSSI) where it runs in an west to east direction. Option 3 crosses the SSSI at approximate OS grid reference SK 77015 19070 and runs parallel to the river for 1.2km (approximately 400m west of the SSSI) where the river runs in a north to south direction. The SSSI designation relates to the site's geological features.

Non-Statutory Sites

The desk study identified twelve non-statutory sites within 2km of all proposed route options. These sites have been designated as Local Wildlife Sites (LWS) for their biodiversity value at a county level and are known to have supporting value to a wide variety of protected and ecologically important species and/or habitats. One site was additionally designated as a Country Park (CP) for its importance for public use. Further descriptions of these sites can be found in Table 4.1. The desk study also identified eight candidate LWS and two potential LWS within 2km of all proposed route options. Candidate/potential LWS are sites which are in the process of receiving designation since the last local planning policy statement was issued. The majority of the sites have been assessed by a panel comprised of Natural England as well as the county ecologist.

Details of the statutory and non-statutory designated sites are presented in Table 4.1 and Figure 1 and are summarised below:

Option 1:

Five non-statutory designated sites were identified within 500m of the proposed bypass

- Brentingby Lodge Farm Meadow (LWS) 2.24ha
- Nottingham Road hedgerows (LWS) 0.25ha and 0.07ha
- Scalford Brook (LWS) 2.68 ha

- Hall Farm Brentingby (LWS) 1.45 ha
- Melton Country Park (LWS,CP) 20.16ha

Of these, Melton Country Park (LWS, CP) is likely to be within the direct footprint of the proposed route.

Option 2:

Four non-statutory sites were identified within 500m of the proposed bypass

- Brentingby Lodge Farm Meadow (LWS) 2.24ha
- Nottingham Road hedgerows (LWS) 0.25ha and 0.07ha
- Scalford Brook (LWS) 2.68 ha
- Melton Country Park (LWS, CP) 20.16ha

Of these, Melton Country Park (LWS, CP) is likely to be within the direct footprint of the proposed route.

Option 3:

Four non-statutory sites were identified within 500m of the proposed bypass

- Nottingham Road hedgerows (LWS) 0.25ha and 0.07ha
- Corfe wet grassland (LWS) 0.82ha
- Scalford Brook (LWS) 2.68 ha
- Melton Country Park (LWS, CP) 20.16ha

Of these, Melton Country Park (LWS, CP) and Corfe wet grassland (LWS) are likely to be within the direct footprint of the proposed route.

Table 4.1. Statutory and Non-statutory designated sites located within 2km of the route options.

Name of site	Designation	OS grid reference (closest point to each option)		Approx. distance to route option	Reason for designation
River Eye	SSSI	Option 1	SK 77218 19243	0km (All route Options cross the SSSI)	Semi-natural lowland river. A representative of clay steams within central and southern England. Records include white-clawed crayfish <i>Austropotamobius pallipes</i> , the water bug <i>Corixa panzer</i> and the white-legged damsel fly <i>Platycnemis pennipes</i> .
		Option 2	SK 77449 18062		
		Option 3	SK 76816 19000		
Oak Plantation hedgerow	LWS	Option 1	SK 72897 21929	1.6km	Species-rich hedgerow
		Option 2	SK 72897 21929	1.6km	
		Option 3	SK 72897 21929	1.6km	
Brentingby Lodge Farm Meadow	LWS	Option 1	SK 77989 20385	500m	Mesotrophic grassland with pond.
		Option 2	SK 77989 20385	500m	
		Option 3	SK 77989 20385	1.5km	
Melton Mowbray Golf Course	LWS	Option 1	SK78600 21800	1.8km	Mesotrophic grassland and species rich hedgerow.
		Option 2	SK78600 21800	1.8km	
Corfe wet grassland	LWS	Option 1	SK 76622 20110	750m	Wet grassland.
		Option 2	SK 76622 20110	750m	
		Option 3	SK 76548 20173	10m	
Nottingham Road	LWS	Option 1	SK 74174 21152	140m	Two species rich hedgerows.
		Option 2	SK 74174 21152	140m	
		Option 3	SK 74174 21152	140m	
Bull Field	LWS	Option 1	SK 74311 19140	1.8km	Mesotrophic grassland.
		Option 2	SK 74311 19140	1.8km	
		Option 3	SK 74311 19140	1.8km	
Scalford Brook	LWS	Option 1	SK 76114 21681	400m	Brook with gravel substrate, riffle, pool system and meanders.
		Option 2	SK 76114 21681	400m	

Name of site	Designation	OS grid reference (closest point to each option)		Approx. distance to route option	Reason for designation
		Option 3	SK 76114 21681	400m	
Bretingby Ash	LWS	Option 1	SK 78202 20391	750m	Mature ash tree <i>Fraxinus excelsior</i> .
		Option 2	SK 78202 20391	750m	
		Option 3	SK 78202 20391	1.6km	
Freeby Estate Ponds	LWS	Option 1	SK 79200 20000	1.8km	Three ponds within the estate containing <i>potamogeton natans</i> .
		Option 2	SK 79200 20000	1.6km	
Hall Farm Bretingby	LWS	Option 1	SK 77930 18996	100m	Sections of the farm have been designated as LWS: two species rich hedgerows, three ponds containing red-data book species and a mesotrophic grassland.
		Option 2	SK 77930 18996	1.2km	
		Option 3	SK 77930 18996	1.3km	
Mars Petcare, River Eye	LWS	Option 1	SK 76058 18803	1.1km	River with emergent vegetation and red-data book species.
		Option 2	SK 76058 18803	1.7km	
		Option 3	SK 76058 18803	950m	
Melton Country Park	LWS, CP	Option 1	SK 76019 21284	Within 50m of all route Options	Green Flag awarded public park with water ways, lakes, woodlands, mesotrophic grassland, scrub and gardens. Notable species include Skylark <i>Alauda arvensis</i> and the Meadow brown butterfly <i>Maniola jurtina</i> .
		Option 2	SK 76019 21284		
		Option 3	SK 76019 21284		

Priority Habitats

From a search of online mapping resources it has been identified that the three bypass options cross mostly arable land which is intersected by hedgerows, lanes and tracks. All route options also pass a small number of urban areas and cross a number of ditches, rivers and streams including the River Eye and Scalford Brook. In addition, Option 2 crosses a small woodland area which is located adjacent to the River Eye.

Arable field margins, lowland meadows, lowland mixed deciduous woodland, rivers and streams and standing water (ponds) are priority habitats under Section 41 of the NERC Act 2006. These habitats have potential for a range of protected and notable species.

The desk study identified 51 waterbodies (ponds) within approximately 500m of the bypass options, details of the ponds are presented in Table 4.2 below and Figure 9. These ponds may have potential to support breeding populations of Great Crested Newts (GCN).

36 ponds are present within 500m of Option 1, 41 ponds are present within 500m of Option 2 and 31 ponds are present within 500m of Option 3.

Table 4.2. Ponds within 500m of the route options.

Pond ID	OS grid reference	Located within 500m of Options 1, 2 and/or 3	Pond ID	OS grid reference	Located within 500m of Options 1, 2 and/or 3
1	SK 76580 17538	Option 1, 2 and 3	26	SK 75541 21861	Option 1, 2 and 3
2	SK 76429 18186	Option 1, 2 and 3	27	SK 75377 21329	Option 1, 2 and 3
3	SK 76838 17634	Option 1, 2 and 3	28	SK 75080 21150	Option 1, 2 and 3
4	SK 76794 17857	Option 1, 2 and 3	29	SK 75009 21085	Option 1, 2 and 3
5	SK 76469 17011	Option 1, 2 and 3	30	SK 74786 21183	Option 1, 2 and 3
6	SK 76448 16960	Option 1, 2 and 3	31	SK 74879 21100	Option 1, 2 and 3
7	SK 76438 16932	Option 1, 2 and 3	32	SK 74771 20843	Option 1, 2 and 3
8	SK 76461 16950	Option 1, 2 and 3	33	SK 74726 20767	Option 1, 2 and 3
9	SK 76767 18644	Option 1 and 3	34	SK 74579 20638	Option 1, 2 and 3
10	SK 76953 19933	Option 1 and 3	35	SK 74624 20583	Option 1, 2 and 3

11	SK 77064 19861	Option 1, 2 and 3		36	SK 74447 20810	Option 1, 2 and 3
12	SK 77680 19924	Option 1 and 2		37	SK 74339 21106	Option 1, 2 and 3
13	SK 77466 20168	Option 1 and 2		38	SK 74437 21246	Option 1, 2 and 3
14	SK 77474 20461	Option 1 and 2		39	SK 74316 21476	Option 1, 2 and 3
15	SK 77756 20569	Option 1 and 2		40	SK 73707 21094	Option 1, 2 and 3
16	SK 77108 21025	Option 1, 2 and 3		41	SK 77822 17941	Option 2
17	SK 77180 21055	Option 1 and 2		42	SK 77970 18795	Option 2
18	SK 77272 21170	Option 1 and 2		43	SK 77565 18699	Option 1 and 2
19	SK 77301 21381	Option 1 and 2		44	SK 78209 19168	Option 2
20	SK 77147 21321	Option 1 and 2		45	SK 78298 18950	Option 2
21	SK 77093 21293	Option 1 and 2		46	SK 78257 19325	Option 2
22	SK 76849 21322	Option 1, 2 and 3		47	SK 77962 19455	Option 2
23	SK 76081 21034	Option 1, 2 and 3		48	SK 78296 19489	Option 2
24	SK 76133 20786	Option 1, 2 and 3		49	SK 76826 20060	Option 3
25	SK 75951 21017	Option 1, 2 and 3		50	SK 76622 20111	Option 3
				51	SK 76655 19246	Option 3

Protected Species

The desk study identified records of 41 protected species within the survey area; these species are offered full or part protection under the Wildlife and Countryside Act 1981. Several species recorded within the study area are also listed on the UK Biodiversity Action Plan (UKBAP), the Leicester Biodiversity Action Plan (LBAP) or Section 41 of the Natural Environment and Rural Communities (NERC) Act 2006 as being of priority conservation concern. Details of the protected and notable species records within a 2km radius of the route options (5km radius for bats) are presented in Table 4.3 below and in Figure 10. The number of records identified for each option are:

Option 1:

- Four amphibian species;
- 12 bat species;
- 48 bird species;
- 26 invertebrate species;
- Six mammals species (excluding bats);
- One plant species; and
- One reptile species.

Option 2:

- Four amphibian species;
- 12 bat species;
- 49 bird species;
- 26 invertebrate species;
- Six mammals species (excluding bats);
- One plant species; and
- One reptile species.

Option 3:

- Four amphibian species;
- 12 bat species;
- 48 bird species;
- 26 invertebrate species;
- Six mammals species (excluding bats);
- One plant species; and
- One reptile species.

Table 4.3. A summary of the protected and notable species identified during the desk study.

Common name	Scientific name	Group	Status	Total number of records	Age range of data	Number of records within the last 10 years	Proposed bypass option	Closest OS grid reference	Closest (approximate) distance to the route options
Great Crested Newt	<i>Triturus cristatus</i>	Amphibian	WCA 5; NERC 41 EC IIa, IVa; Bern II LBAP	63	1996 - 2015	56	Option 1 Option 2 Option 3	SK740210	250m of all options
Barn owl - confirmed breeding records	<i>Tyto alba</i>	Birds	WCA 1 LBAP	4	2007- 2011	3	Option 1 Option 2 Option 3	SK7818 SK7818 SK7818	1.5km 700m 2km
Schedule 1 WCA listed bird species records (24 birds species including Barn Owl, Bearded Tit, Redwing, Black Redstart, Brambling, Common Crossbill, Fieldfare, Garganey, Green Sandpiper, Greylag Goose, Goldeneye, Hobby, Kingfisher, Little Ringed Plover, Mediterranean Gull, Merlin, Osprey, Peregrine, Pintail, Quail, Red, throated Diver and Red Kite)	<i>Panurus biarmicus</i> ,, <i>Turdus iliacus</i> , <i>Phoenicurus ochruro</i> , <i>Fringilla montifringilla</i> , <i>Loxia curvirostra</i> , <i>Turdus pilaris</i> , <i>Anas querquedula</i> , <i>Tinga ochropus</i> , <i>Anser anser</i> , <i>Bucephala clangula</i> ., <i>Falco Subbuteo</i> , <i>Alcedo atthis</i> , <i>Charadrius dubius</i> . <i>Ichthyaetus melanocephalus</i> , <i>Falco columbarius</i> , <i>Pandion haliaetus</i> , <i>Falco peregrinus</i> , <i>Anas acuta</i> , <i>Coturnix coturnix</i> , <i>Gavia stellate</i> and <i>Milvus milvus</i> .	Birds	WCA 1 LBAP	284	1996 - 2015	250	Option 1 Option 2 Option 3	SK772192 SK746210 SK746210	50m 150m 150m
White-clawed crayfish	<i>Austropotamobius pallipes</i>	Invertebrate	WCA 5 NERC 41 LBAP	33	1990- 2001	0	Option 1 Option 2 Option 3	SK771192 SK771192 SK771192	100m 700m 50m

Common name	Scientific name	Group	Status	Total number of records	Age range of data	Number of records within the last 10 years	Proposed bypass option	Closest OS grid reference	Closest (approximate) distance to the route options
Bats (12 bat species recorded: <i>barbastelle</i> ; Brandt's bat; brown long-eared bat; common pipistrelle; Daubenton's bat; greater horseshoe bat; Nathusius' pipistrelle; Natterer's bat; noctule; <i>Myotis</i> sp., soprano pipistrelle; and whiskered bat).	<i>Chiroptera</i> <i>Barbastella barbastellus</i> , <i>Myotis brandtii</i> ; <i>Plecotus auritus</i> , <i>Pipistrellus pipistrellus</i> , <i>Myotis daubentonii</i> , <i>Rhinolophus ferrumequinum</i> , <i>Nathusius' pipistrelle</i> , <i>Pipistrellus nathusii</i> , <i>Myotis nattereri</i> , <i>Nyctalus noctula</i> , <i>Pipistrellus pygmaeus</i> and <i>Myotis mystacinus</i> .	Mammal	WCA 5; EC IVa; Bern III; LBAP	802 (includes 331 confirmed roost records)	1990 - 2016	431 (includes 205 confirmed roost records)	Option 1 Option 2 Option 3	SK762174	Within 200m of all route options
Badger – identified setts	<i>Meles meles</i>	Mammal	WCA 6; BA; Bern III	29 (all records are confirmed setts)	1991- 2015	19	Option 1 Option 2 Option 3	Confidential	One sett within the footprint of Option 1 and 3. Four setts within the footprint of Option 2.
Hare	<i>Lepus europaeus</i>	Mammal	LBAP	3	2006- 2011	1	Option 1 Option 2 Option 3	SK773217	Within 900m of all route options
Hedgehog	<i>Erinaceus europaeus</i>	Mammal	LBAP	1	2013	1	Option 1 Option 2 Option 3	SK755184	Within 1.2km of all route options
Otter	<i>Lutra lutra</i>	Mammal	WCA 5; NERC 41; EC IIa, IIIa; Bern II LBAP	10	2000- 2009	2	Option 1 Option 2 Option 3	SK772192 SK772192 SK772192	100m 700m 200m

Common name	Scientific name	Group	Status	Total number of records	Age range of data	Number of records within the last 10 years	Proposed bypass option	Closest OS grid reference	Closest (approximate) distance to the route options
Water vole	<i>Arvicola amphibius</i>	Mammal	WCA 5; NERC 41; LBAP	11	1994-2006	0	Option 1 Option 2 Option 3	SK758212	Within the footprint of all route options.
Grass snake	<i>Natrix natrix</i>	Reptile	WCA 5; NERC 41; Bern III	37	2000-2015	12	Option 1 Option 2 Option 3	SK751211 SK751211 SK7620	400m 400m 150m

Natural England Licences

Data was obtained from MAGIC on European Protected Species Mitigation (EPSM) licences that have been granted by Natural England in recent years for projects within approximately 2km of the route options. Three EPSM licences for bats and one for GCN were recorded:

- EPSM2010-2566 Pipistrelle species and Brown long-eared bats; damage and destruction of a breeding roost and resting place (OS grid reference SK730210). The location of the licence is approximately 1.2km from all three proposed options;
- EPSM2009-1249 – Pipistrelle species; damage and destructing of a resting place (OS grid reference SK 751210). The location of the licence is approximately 450m from all three proposed options;
- EPSM 2010- 2699 – Pipistrelle species and Brown long-eared bats; damage and destruction of a breeding roost and resting place (OS grid reference SK755185). The location of the licence is approximately 1.6km from Option 1 and 1.4km from Option 3.
- EPSM2010-2654 – GCN; damage and destructing of a resting place (OS grid reference SK751208). The location of the licence is approximately 500m from all three proposed options.

Further details of these licences have been requested from Natural England under the Freedom of Information Act.

LPA Ecology Comments

The LPA made the following general comments on the three proposed options:

- All LWS should be retained;
- When choosing the route the LPA would be looking to keep as many connections as possible between the two sides and habitat connectivity must be considered, especially in the vicinity of badger setts as appropriate;
- Crossing of the SSSI will be sensitive. The LPA would defer impacts on this to Natural England, but it would be assumed that the optimum route would be that with the smallest impact;
- The LPA would request that all surveyors are made familiar with the LWS criteria prior to completing any habitat surveys and would request that all ecological surveys are completed at the optimal time of year; and
- The LPA stated that without up-to-date survey data they would be unable to make a judgement on the preferred route. They have requested to be contacted once habitat and protected species surveys have been completed.

4.1.3 Ecological Recommendations

All options have high potential for permanent habitat loss as well as creating permanent fragmentation. To mitigate for the loss of habitat offsite enhancement works may be required. Where possible, priority habitats, LWS's and the River Eye SSSI should be avoided during the planning, detailed design and construction phases of the scheme to prevent permanent loss of these habitats.

Consultation will be required with the LPA and Natural England to discuss the proposals and to agree the scope of any additional surveys and / or mitigation if direct impacts are anticipated to sites which they manage. The LPA has requested habitat and protected species surveys are completed before they can be fully consulted.

Further Surveys

It is recommended that an extended Phase 1 Habitat Survey is completed to accurately assess the potential ecological impacts of the proposed scheme. Following the extended Phase 1 Habitat Survey further targeted surveys for protected species may be recommended based upon the Phase 1 results.

4.1.4 References

Conventions and legislation <http://jncc.defra.gov.uk/page-1359>

JNCC (2010) Handbook for Phase 1 Habitat Survey – A technique for environmental audit. ISBN 0 86139 636 7

Leicestershire and Rutland Environment Records Centre (LRERC)
<https://www.leicestershire.gov.uk/environment-and-planning/planning/planning-and-ecology>

Multi-agency Geographic Information for the Countryside (MAGIC). Available online at:
<http://magic.defra.gov.uk/MagicMap.aspx>

National Biodiversity Network Gateway (NBN). Available online at <https://data.nbn.org.uk/>

5. Cultural Heritage

World Heritage Site (WHS)

Proposed Bypass Option 1:

- There are no WHS directly affected by the proposed bypass.
- There are no WHS within 1km of the proposed bypass.

Proposed Bypass Option 2:

- There are no WHS directly affected by the proposed bypass.
- There are no WHS within 1km of the proposed bypass.

Proposed Bypass Option 3:

- There are no WHS directly affected by the proposed bypass.
- There are no WHS within 1km of the proposed bypass.

Conservation Area (CA)

Proposed Bypass Option 1:

- There are no CA directly affected by the proposed bypass.
- There are no CA within 1km of the proposed bypass but Melton Mowbray Conservation Area is approximately 1.5km to the west.

Proposed Bypass Option 2:

- There are no CA directly affected by the proposed bypass.
- There are no CA within 1km of the proposed bypass but Melton Mowbray Conservation Area is approximately 2km to the west.

Proposed Bypass Option 3:

- There are no CA directly affected by the proposed bypass.
- There are no CA within 1km of the proposed bypass but Melton Mowbray Conservation Area is approximately 1.2km to the west.

Scheduled Monument (SM)

Proposed Bypass Option 1:

- There are no SM directly affected by the proposed bypass.
- There is one SM approximately 250m west (Sysonby Grange), one SM approximately 450m south (St Mary and St Lazarus Hospital) and one SM approximately 600m north (Spinney Farm), of the proposed bypass.

Proposed Bypass Option 2:

- There are no SM directly affected by the proposed bypass.
- There is one SM approximately 250m west (Sysonby Grange), one SM approximately 450m south (St Mary and St Lazarus Hospital) and one SM approximately 600m north (Spinney Farm), of the proposed bypass.

Proposed Bypass Option 3:

- There are no SM directly affected by the proposed bypass.
- There is one SM approximately 250m west (Sysonby Grange), one SM approximately 450m south (St Mary and St Lazarus Hospital) and one SM approximately 600m north (Spinney Farm), of the proposed bypass.

Listed Buildings (LB)

Proposed Bypass Option 1:

- There are no LB directly affected by the proposed bypass.
- There are several LBs within 1km of the proposed bypass:

Listed Status	Within 500m	Within 1km
Grade I Listed Building		1. Church of St James
Grade II* Listed Building	1. Church of St Mary the Virgin	1. Squires Monument
Grade II Listed Building	1. St Mary's C of E Primary School 2. Syonsby Lodge 3. Milepost 4. Wold House 5. Home Farmhouse 6. Base of Cross (c. 2m south west of Tower of Church of Mary the Virgin) 7. Row of 3 headstones 8. The Hall	1. Chestnut Farmhouse

Proposed Bypass Option 2:

- There are no LB directly affected by the proposed bypass.
- There are several LBs within 1km of the proposed bypass:

Listed Status	Within 500m	Within 1km
Grade I Listed Building		1. Church of St James
Grade II* Listed Building	1. Church of St Mary the Virgin	1. Squires Monument
Grade II Listed Building	1. St Mary's C of E Primary School 2. Syonsby Lodge 3. Milepost 4. Wold House 5. Home Farmhouse 6. Base of Cross (c. 2m south west of Tower of Church of Mary the Virgin) 7. Row of 3 headstones 8. The Hall	1. Chestnut Farmhouse 2. Manor Farmhouse 3. Former Church of St Mary

Proposed Bypass Option 3:

- There are no LB directly affected by the proposed bypass.
- There are several LBs within 1km of the proposed bypass:

Listed Status	Within 500m	Within 1km
Grade I Listed Building		1. Church of St. James
Grade II* Listed Building	1. Church of St Mary the Virgin	1. Squires Monument
Grade II Listed Building	1. Base of Cross (c. 2m south west of Tower of Church of Mary the Virgin) 2. Row of 3 headstones 3. Home Farmhouse 4. Wold House 5. Sysonby Lodge 6. St. Mary's C of E Primary School	1. Chestnut Farmhouse 2. The Hall 3. Milepost at SK 77532 2060

Registered Park or Garden (RPG)

Proposed Bypass Option 1:

- There are no RPG directly affected by the proposed bypass.
- There are no RPG within 1km of the proposed bypass.

Proposed Bypass Option 2:

- There are no RPG directly affected by the proposed bypass.
- There are no RPG within 1km of the proposed bypass.

Proposed Bypass Option 3:

- There are no RPG directly affected by the proposed bypass.
- There are no RPG within 1km of the proposed bypass.

Registered Battlefield

Proposed Bypass Option 1:

- There are no Registered Battlefields directly affected by the proposed bypass.
- There are no Registered Battlefields within 1km of the proposed bypass.

Proposed Bypass Option 2:

- There are no Registered Battlefields directly affected by the proposed bypass.
- There are no Registered Battlefields within 1km of the proposed bypass.

Proposed Bypass Option 3:

- There are no Registered Battlefields directly affected by the proposed bypass.
- There are no Registered Battlefields within 1km of the proposed bypass.

6. Water Resources

Watercourse

Proposed Bypass Option 1:

- The proposed bypass passes through a short section of the River Eye, Scalford Brook and Thorpe Brook.
- There is a large waterbody (Twin Lakes Amusement Park) approximately 500m northeast of the proposed bypass, and several additional minor waterbodies within 1km of the proposed bypass.

Proposed Bypass Option 2:

- The proposed bypass passes through a short section of the River Eye, Scalford Brook and Thorpe Brook.
- There is a large waterbody (Twin Lakes Amusement Park) approximately 500m northeast of the proposed bypass, and several additional minor waterbodies within 1km of the proposed bypass.

Proposed Bypass Option 3:

- The proposed bypass passes through a short section of the River Eye, Scalford Brook and Thorpe Brook.
- There is a large waterbody (Twin Lakes Amusement Park) approximately 750m northeast of the proposed bypass, and several additional minor waterbodies within 1km of the proposed bypass.

Flood Zone

Proposed Bypass Option 1:

- The proposed bypass passes through a section of Flood Zone 2 & 3 for approximately 300m.
- Additional sections of the same Flood Zone 2 & 3 are also located within 1km of the proposed bypass.

Proposed Bypass Option 2:

- The proposed bypass passes through a section of Flood Zone 2 & 3 for approximately 600m.
- Additional sections of the same Flood Zone 2 & 3 are also located within 1km of the proposed bypass.

Proposed Bypass Option 3:

- The proposed bypass passes through a section of Flood Zone 2 & 3 for approximately 750m.
- Additional sections of the same Flood Zone 2 & 3 are also located within 1km of the proposed bypass.

Source Protection Zone

Proposed Bypass Option 1:

- There are no Source Protection Zones directly affected by the proposed bypass.
- There is a Source Protection Zone 1 (Inner Zone), Source Protection Zone 2 (Outer Zone) and Source Protection Zone 3 (Total Catchment) approximately 1.5km west of the proposed bypass.

Proposed Bypass Option 2:

- There are no Source Protection Zones directly affected by the proposed bypass.
- There is a Source Protection Zone 1 (Inner Zone), Source Protection Zone 2 (Outer Zone) and Source Protection Zone 3 (Total Catchment) approximately 2km west of the proposed bypass.

Proposed Bypass Option 3:

- There are no Source Protection Zones directly affected by the proposed bypass.
- There is a Source Protection Zone 1 (Inner Zone), Source Protection Zone 2 (Outer Zone) and Source Protection Zone 3 (Total Catchment) approximately 900m west of the proposed bypass.

7. Public Access

National Trails

Proposed Bypass Option 1:

- There are no National Trails directly affected by the proposed bypass.
- There are no National Trails within 1km of the proposed bypass.

Proposed Bypass Option 2:

- There are no National Trails directly affected by the proposed bypass.
- There are no National Trails within 1km of the proposed bypass.

Proposed Bypass Option 3:

- There are no National Trails directly affected by the proposed bypass.
- There are no National Trails within 1km of the proposed bypass.

National Cycle Route (NCR)

Proposed Bypass Option 1:

- The proposed bypass passes through a short section of National Cycle Route (NR 64).
- Additional sections of the same NCR are also located within 1km of the proposed bypass.

Proposed Bypass Option 2:

- The proposed bypass passes through a short section of National Cycle Route (NR 64).
- Additional sections of the same NCR are also located within 1km of the proposed bypass.

Proposed Bypass Option 3:

- The proposed bypass passes through a short section of National Cycle Route (NR 64).
- Additional sections of the same NCR are also located within 1km of the proposed bypass.

Public Rights of Way (PRoW)

Proposed Bypass Option 1:

- The proposed bypass passes through 7 PRoW.
- There are an additional 50 PRoW within 1km of the proposed bypass.

Proposed Bypass Option 2:

- The proposed bypass passes through 8 PRoW.
- There are an additional 49 PRoW within 1km of the proposed bypass.

Proposed Bypass Option 3:

- The proposed bypass passes through 6 PRoW.
- There are an additional 56 PRoW within 1km of the proposed bypass.

Affected PROWs are summarised, per option, in the table below:

	PROW	Option 1	Option 2	Option 3
Directly Crossed	Footpath	6	7	4
	Bridleway	0	0	0
	Cycle Route	1	1	2
Additional PROW Within 1km	Footpath	31	30	34
	Bridleway	3	3	3
	Cycle Route	16	16	19

Existing Pipelines

Proposed Bypass Option 1:

- The bypass directly crosses one existing pipeline.
- There are 4 additional pipelines within 1km of the proposed bypass.

Proposed Bypass Option 2:

- The bypass directly crosses one existing pipeline.
- There are 4 additional pipelines within 1km of the proposed bypass.

Proposed Bypass Option 3:

- The bypass directly crosses one existing pipeline.
- There are 4 additional pipelines within 1km of the proposed bypass.

National Trust Inalienable Land

Proposed Bypass Option 1:

- There is no National Trust Inalienable Land directly affected by the proposed bypass.
- There is no National Trust Inalienable Land within 1km of the proposed bypass.

Proposed Bypass Option 2:

- There is no National Trust Inalienable Land directly affected by the proposed bypass.
- There is no National Trust Inalienable Land within 1km of the proposed bypass.

Proposed Bypass Option 3:

- There is no National Trust Inalienable Land directly affected by the proposed bypass.
- There is no National Trust Inalienable Land within 1km of the proposed bypass.

Crown Land

Proposed Bypass Option 1:

- There is no Crown Land directly affected by the proposed bypass.
- There is no Crown Land within 1km of the proposed bypass.

Proposed Bypass Option 2:

- There is no Crown Land directly affected by the proposed bypass.
- There is no Crown Land within 1km of the proposed bypass.

Proposed Bypass Option 3:

- There is no Crown Land directly affected by the proposed bypass.
- There is no Crown Land within 1km of the proposed bypass.

8. Assessment of Local Plan Allocated Land

This section offers a summary of potential impacts upon Allocated Land referred to in the Melton Mowbray Local Plan. These include:

- Housing Allocation
- Reserve Site (Housing)
- Strategic Housing Allocation
- Employment Site
- Strategic Employment Allocation
- Local Green Space
- Melton Country Park
- Indicative Local Centre & Primary School
- Indicative Distributor Roads and Indicative Western Bypass

Please refer to Figure 5 for details.

Housing Allocation Sites (HAS)

Proposed Bypass Option 1:

- There are no HAS directly affected by the proposed bypass.
- There is one HAS approximately 100m west, one HAS approximately 150m south west, one HAS 150m south, one HAS approximately 150m west, one HAS approximately 1km south and one HAS 1km west of the proposed bypass.

Proposed Bypass Option 2:

- There are no HAS directly affected by the proposed bypass.
- There is one HAS approximately 100m west, one HAS approximately 150m south west, one HAS 150m south, one HAS approximately 150m west, one HAS approximately 1km south and one HAS 1km west of the proposed bypass.

Proposed Bypass Option 3:

- There are no HAS directly affected by the proposed bypass.
- There is one HAS approximately 100m west, one HAS approximately 150m south west, one HAS 150m south, one HAS approximately 600m east, one HAS approximately 900m west, one HAS approximately 1km west, one HAS approximately 1km south and one HAS approximately 1km west of the proposed bypass.

Reserve Sites (Housing)

Proposed Bypass Option 1:

- There are no Housing Reserve Sites directly affected by the proposed bypass.
- There is one Housing Reserve Site approximately 100m west of the proposed bypass.

Proposed Bypass Option 2:

- There are no Housing Reserve Sites directly affected by the proposed bypass.
- There is one Housing Reserve Site approximately 100m west of the proposed bypass.

Proposed Bypass Option 3:

- There are no Housing Reserve Sites directly affected by the proposed bypass.
- There is one Housing Reserve Site approximately 500m east and one approximately 600m west of the proposed bypass.

Strategic Housing Allocation

Proposed Bypass Option 1:

- The bypass directly crosses three SHAs
- There is one SHA immediately adjacent and one SHA approximately 800m to the west of the proposed bypass.

Proposed Bypass Option 2:

- The bypass directly crosses three SHAs
- There is one SHA immediately adjacent and one SHA approximately 800m to the west of the proposed bypass.

Proposed Bypass Option 3:

- The bypass directly crosses three SHAs
- There is one SHA immediately adjacent and one SHA approximately 800m to the west of the proposed bypass.

Employment Site

Proposed Bypass Option 1:

- There are no Employment Sites directly affected by the proposed bypass.
- There is one Employment Site approximately 500m west and one Employment Site approximately 800m west of the proposed bypass.

Proposed Bypass Option 2:

- There are no Employment Sites directly affected by the proposed bypass.
- There is one Employment Site approximately 1km west of the proposed bypass.

Proposed Bypass Option 3:

- There are no Employment Sites directly affected by the proposed bypass.
- There is one Employment Site approximately 100m west and one Employment Site approximately 600m west of the proposed bypass.

Strategic Employment Allocation

Proposed Bypass Option 1:

- There are no Strategic Employment Allocations directly affected by the proposed bypass.
- There are no Strategic Employment Allocations within 1km of the proposed bypass.

Proposed Bypass Option 2:

- There are no Strategic Employment Allocations directly affected by the proposed bypass.
- There are no Strategic Employment Allocations within 1km of the proposed bypass.

Proposed Bypass Option 3:

- There are no Strategic Employment Allocations directly affected by the proposed bypass.
- There are no Strategic Employment Allocations within 1km of the proposed bypass.

Local Green Space (LGS)

Proposed Bypass Option 1:

- The bypass directly crosses one LGS for approximately 100m.
- There is one LGS approximately 1km west, two LGS approximately 300m west, one LGS approximately 500m west, fifteen LGS approximately 600m southeast and one LGS approximately 750m west of the proposed bypass.

Proposed Bypass Option 2:

- The bypass directly crosses one LGS for approximately 100m.
- There is one LGS approximately 1km west, two LGS approximately 300m west, one LGS approximately 500m west, one LGS approximately 500m south, fourteen LGS approximately 600m southeast and one LGS approximately 750m west of the proposed bypass.

Proposed Bypass Option 3:

- The bypass directly crosses one LGS for approximately 100m.
- There is one LGS approximately 1km west, two LGS approximately 300m west, one LGS approximately 500m west, fifteen LGS approximately 600m southeast and one LGS approximately 750m west of the proposed bypass.

Indicative Local Centre and Primary School

Proposed Bypass Option 1:

- There is no Indicative Local Centre and Primary School directly affected by the proposed bypass.
- There is no Indicative Local Centre and Primary School within 1km of the proposed bypass, but one is located approximately 1.2km to the west of the proposed route.

Proposed Bypass Option 2:

- There is no Indicative Local Centre and Primary School directly affected by the proposed bypass.
- There is no Indicative Local Centre and Primary School within 1km of the proposed bypass, but one is located approximately 1.2km to the west of the proposed route.

Proposed Bypass Option 3:

- There is no Indicative Local Centre and Primary School directly affected by the proposed bypass.
- There is no Indicative Local Centre and Primary School within 1km of the proposed bypass, but one is located approximately 1.2km to the west of the proposed route.

Indicative Distributor Roads and Bypass Option

Proposed Bypass Option 1:

- The Indicative Distributor Road is approximately 150m north of the proposed bypass.
- The Indicative Western Bypass lies to the west of the proposed bypass.

Proposed Bypass Option 2:

- The Indicative Distributor Road is approximately 150m north of the proposed bypass.
- The Indicative Western Bypass lies to the west of the proposed bypass.

Proposed Bypass Option 3:

- The Indicative Distributor Road is approximately 150m north of the proposed bypass.
- The Indicative Western Bypass lies to the west of the proposed bypass.

9. Conclusions and Recommendations

Option 1

The route of the proposed bypass directly affects the following constraints:

- Melton Country Park is crossed for approximately 100m;
- Landscape Character Zone (Medium/High) is crossed for approximately 6.7km;
- Landscape Character Assessment Units LCU15, LCU13, LCU10 and LCU8 are crossed;
- River Eye SSSI is crossed for a short section;
- Local Wildlife Site is crossed for approximately 100m;
- Candidate Local Wildlife Site is crossed for approximately 100m plus another very small cLWS;
- Wildlife Corridors x6 are crossed;
- Ecological protected species record of one badger sett located along route;
- River Eye, Scafford Brook and Thorpe Brook are crossed;
- Flood Zone 2 & 3 is crossed for approximately 300m;
- National Cycle Route NR64 is crossed;
- Public Rights of Way x7 are crossed;
- One existing pipeline is crossed;
- Strategic Housing Allocations x3 are crossed; and
- Local Green Space is crossed for approximately 100m.

Option 2

The route of the proposed bypass directly affects the following constraints:

- Melton Country Park is crossed for approximately 100m;
- Landscape Character Zone (Medium/High) is crossed for approximately 6.4km;
- Landscape Character Assessment Units LCU15, LCU13, LCU10 and LCU8 are crossed;
- River Eye SSSI is crossed for a short section;
- Local Wildlife Site is crossed for approximately 100m;
- Candidate Local Wildlife Site is crossed for approximately 100m plus another very small cLWS;
- Wildlife Corridors x6 are crossed;
- Ecological protected species record of four badger setts located along route;
- River Eye, Scafford Brook and Thorpe Brook are crossed;
- Flood Zone 2 & 3 is crossed for approximately 600m;
- National Cycle Route NR64 is crossed;
- Public Rights of Way x8 are crossed;
- One existing pipeline is crossed;
- Strategic Housing Allocations x3 are crossed; and
- Local Green Space is crossed for approximately 100m.

Option 3

The route of the proposed bypass directly affects the following constraints:

- Melton Country Park is crossed for approximately 100m;
- Landscape Character Zone (Medium/High) is crossed for approximately 6.5km;
- Landscape Character Assessment Units LCU15 and LCU8 are crossed;

- River Eye SSSI is crossed for a short section;
- Local Wildlife Site is crossed for approximately 100m plus another small LWS;
- Candidate Local Wildlife Site is crossed for approximately 100m plus another very small cLWS;
- Wildlife Corridors x6 are crossed;
- Ecological protected species record of one badger sett located along route;
- River Eye, Scalford Brook and Thorpe Brook are crossed;
- Flood Zone 2 & 3 is crossed for approximately 750m;
- National Cycle Route NR64 is crossed;
- Public Rights of Way x6 are crossed;
- One existing pipeline is crossed;
- Strategic Housing Allocations x3 are crossed; and
- Local Green Space is crossed for approximately 100m.

‘Do Nothing’ Option

The ‘Do Nothing’ option would have no effects on the environmental designations mentioned above, including no effect upon the River Eye SSSI and no effect on the visual amenity of the views experienced from Melton Country Park.

However, there will continue to be an increase in traffic flow throughout the busy town centre, with drivers experiencing congestion and more stressful conditions as a result. There may also be a decrease in air quality in the town centre due to higher volumes of slow traffic. This will be exacerbated by the three new Employment Sites development allocations within the town centre (see Figure 5).

There is currently no other way for vehicles travelling along the A606 to avoid passing directly through the Melton Mowbray Conservation Area, or passing other sensitive environmental features such as Listed Buildings. There are a total of 106 Listed Buildings within 1km of the town centre, with a total of 94 Listed Buildings within the Melton Mowbray Conservation Area alone (including 1x Grade I, 5x Grade II*, 88x Grade II).

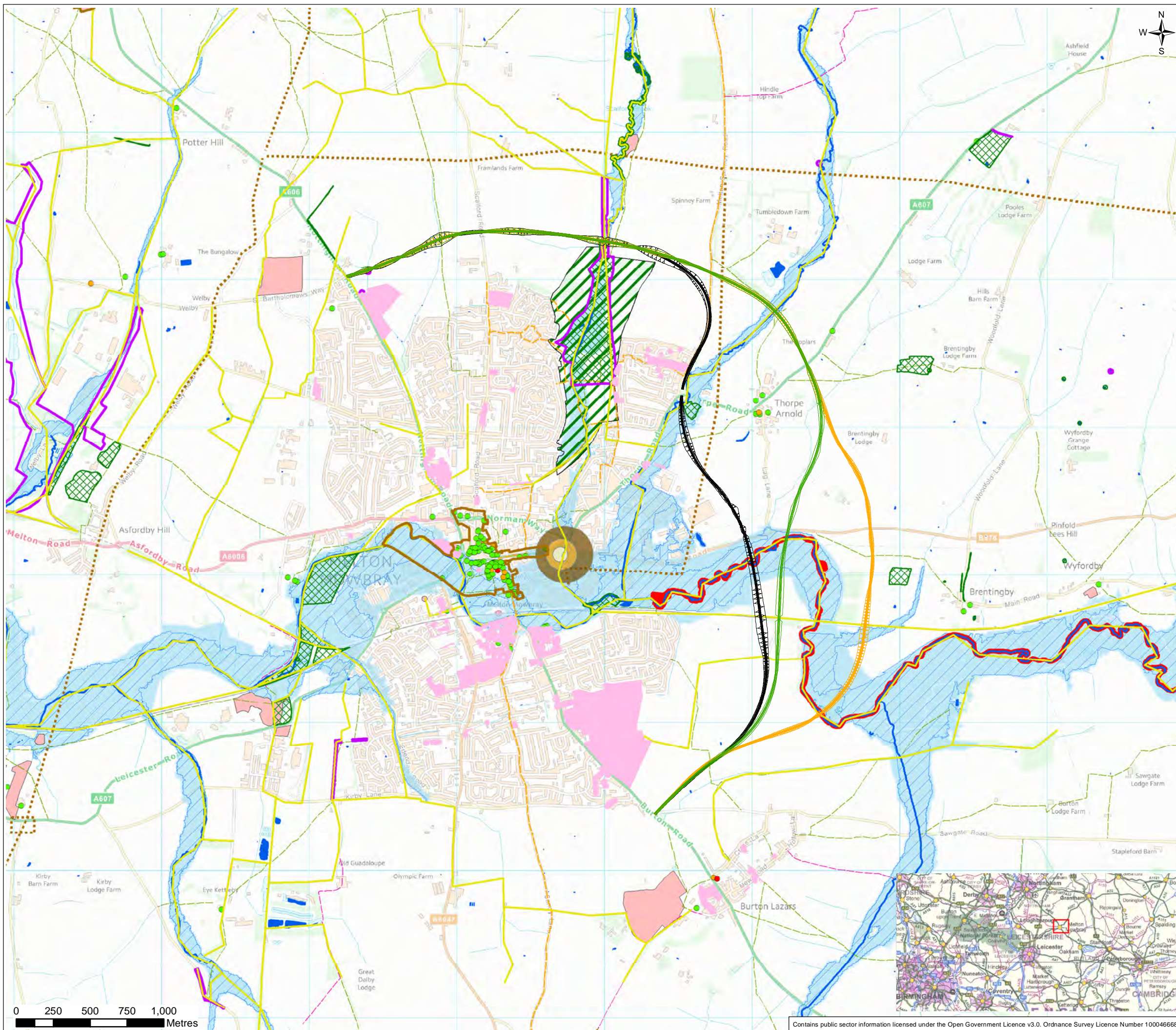
Conclusions from Option 1, Option 2 and Option 3

Option 1 and Option 2 are very similar in terms of potential environmental impact but Option 1 crosses less Flood Zone 2&3 than Option 2 and Option 3, which may have a bearing upon the final route option.

Option 3 is significantly closer to the residential areas in the east of Melton Mowbray, closest to Melton Mowbray Conservation Area (but still approximately 1km away), crosses the most Flood Zone 2&3 and crosses an additional Local Wildlife Site, when compared to Option 1 and Option 2.

Each option broadly follows the Indicative Distributor Road, and aligns with the Indicative Western Bypass, that are shown in the Melton Mowbray Local Plan.

It may be prudent to consider a minor route realignment to avoid directly impacting upon Melton Country Park and Local Wildlife Site, for all route options.



- Legend:**
- Proposed bypass Option 1
 - Proposed bypass Option 2
 - Proposed bypass Option 3
 - - - Existing pipelines
 - - - Footpath
 - - - Bridleway
 - - - National Cycle Route
 - ▨ Country Park
 - Site of Special Scientific Interest (SSSI)
 - ▧ Local Wildlife Site (LWS)
 - Candidate/Potential Local Wildlife Site
 - Wildlife Corridor
 - Ancient Woodland
 - Conservation Area
 - Scheduled Monument
 - Grade I Listed Building
 - Grade II* Listed Building
 - Grade II Listed Building
 - Tree Preservation Order
 - Main Rivers
 - Waterbody
 - ▨ Flood Zone 3
 - ▨ Flood Zone 2
 - Source Protection Zone 1 (inner zone)
 - Source Protection Zone 2 (outer zone)
 - Source Protection Zone 3 (total catchment)

0	30/01/2017	Initial Issue	EW	SW	SW	RB
Rev.	Date	Purpose of revision	Drawn	Check'd	Rev'd	Appr'd

JACOBS
 7th Floor, 2 Colmore Square, 38 Colmore Circus, Queensway, Birmingham, B4 6BN
 Tel: +44 (0)121 237 4000 Fax: +44 (0)121 237 4001
 www.jacobs.com

Client **Leicestershire County Council**

Project **MELTON MOWBRAY EASTERN DISTRIBUTOR ROAD**

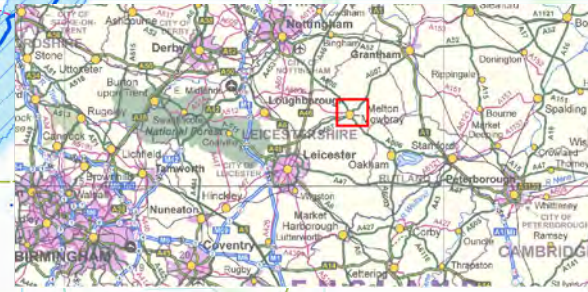
Drawing Title **FIGURE 1 ENVIRONMENTAL CONSTRAINTS ALL OPTIONS**

Drawing Status **FINAL**

Scale @ A3 **1:25,000** **DO NOT SCALE**

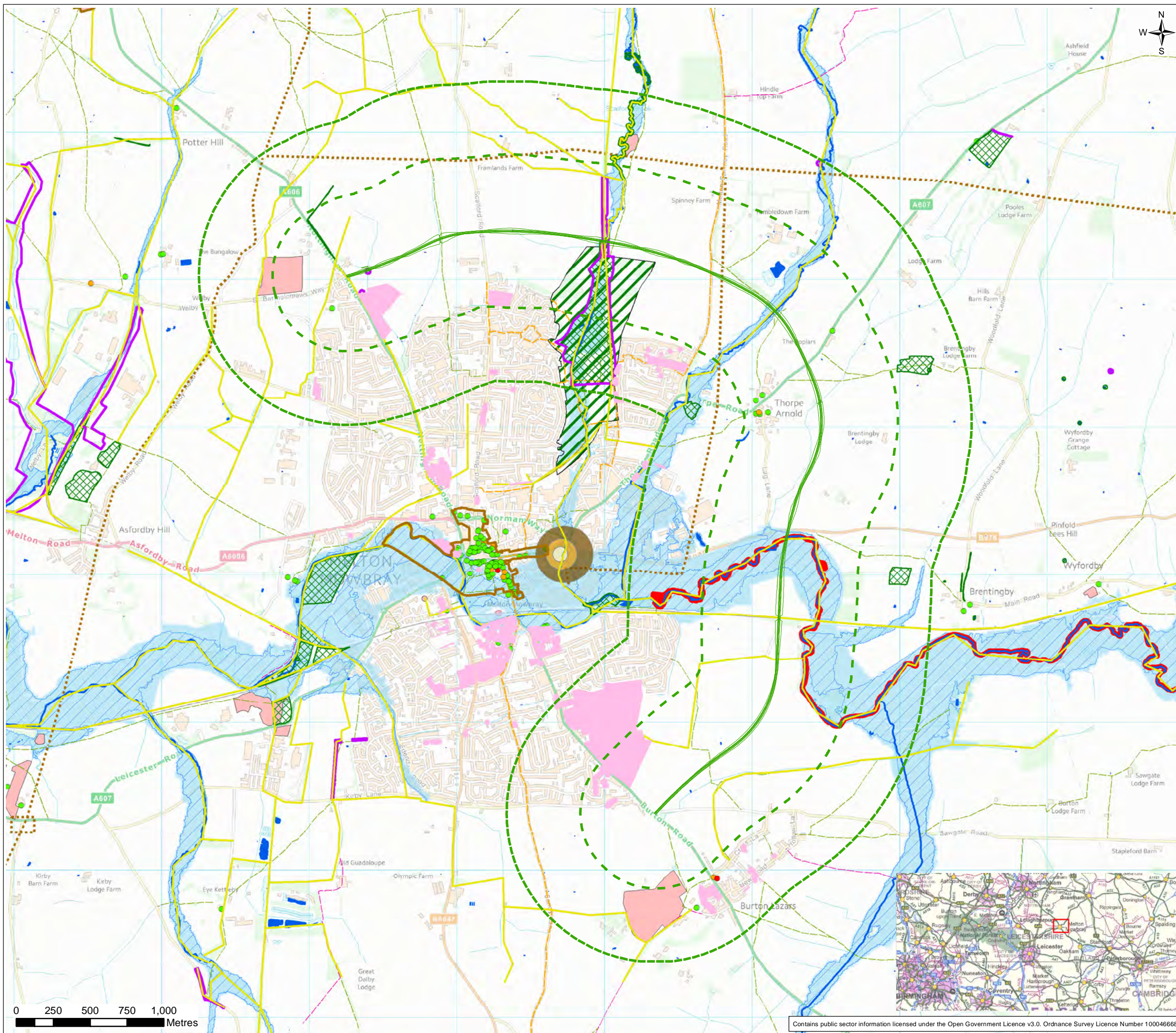
Jacobs No. **B221700**

Client No. **B221700/ENV/001** Rev **0**



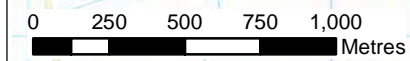
Contains public sector information licensed under the Open Government Licence v3.0. Ordnance Survey Licence Number 100046668

This drawing is not to be used in whole in or part other than for the intended purpose and project as defined on this drawing. Refer to the contract for full terms and conditions.



Legend:

- Proposed bypass Option 1
- - - Option 1 500m study area
- - - - - Option 1 1km study area
- · - · - Existing pipelines
- Footpath
- Bridleway
- National Cycle Route
- ▨ Country Park
- Site of Special Scientific Interest (SSSI)
- ▨ Local Wildlife Site (LWS)
- Candidate/Potential Local Wildlife Site
- Wildlife Corridor
- ▨ Ancient Woodland
- ▨ Conservation Area
- ▨ Scheduled Monument
- Grade I Listed Building
- Grade II* Listed Building
- Grade II Listed Building
- ▨ Tree Preservation Order
- Main Rivers
- Waterbody
- ▨ Flood Zone 3
- ▨ Flood Zone 2
- ▨ Source Protection Zone 1 (inner zone)
- ▨ Source Protection Zone 2 (outer zone)
- ▨ Source Protection Zone 3 (total catchment)



Contains public sector information licensed under the Open Government Licence v3.0. Ordnance Survey Licence Number 100046668

0	30/01/2017	Initial Issue	EW	SW	SW	RB
Rev.	Date	Purpose of revision	Drawn	Check'd	Rev'd	Appr'd



7th Floor, 2 Colmore Square, 38 Colmore Circus, Queensway, Birmingham, B4 6BN
Tel: +44 (0)121 237 4000 Fax: +44.(0)121.237.4001
www.jacobs.com

Client

Project
MELTON MOWBRAY EASTERN DISTRIBUTOR ROAD

Drawing Title
**FIGURE 2
ENVIRONMENTAL CONSTRAINTS
OPTION 1**

Drawing Status
FINAL

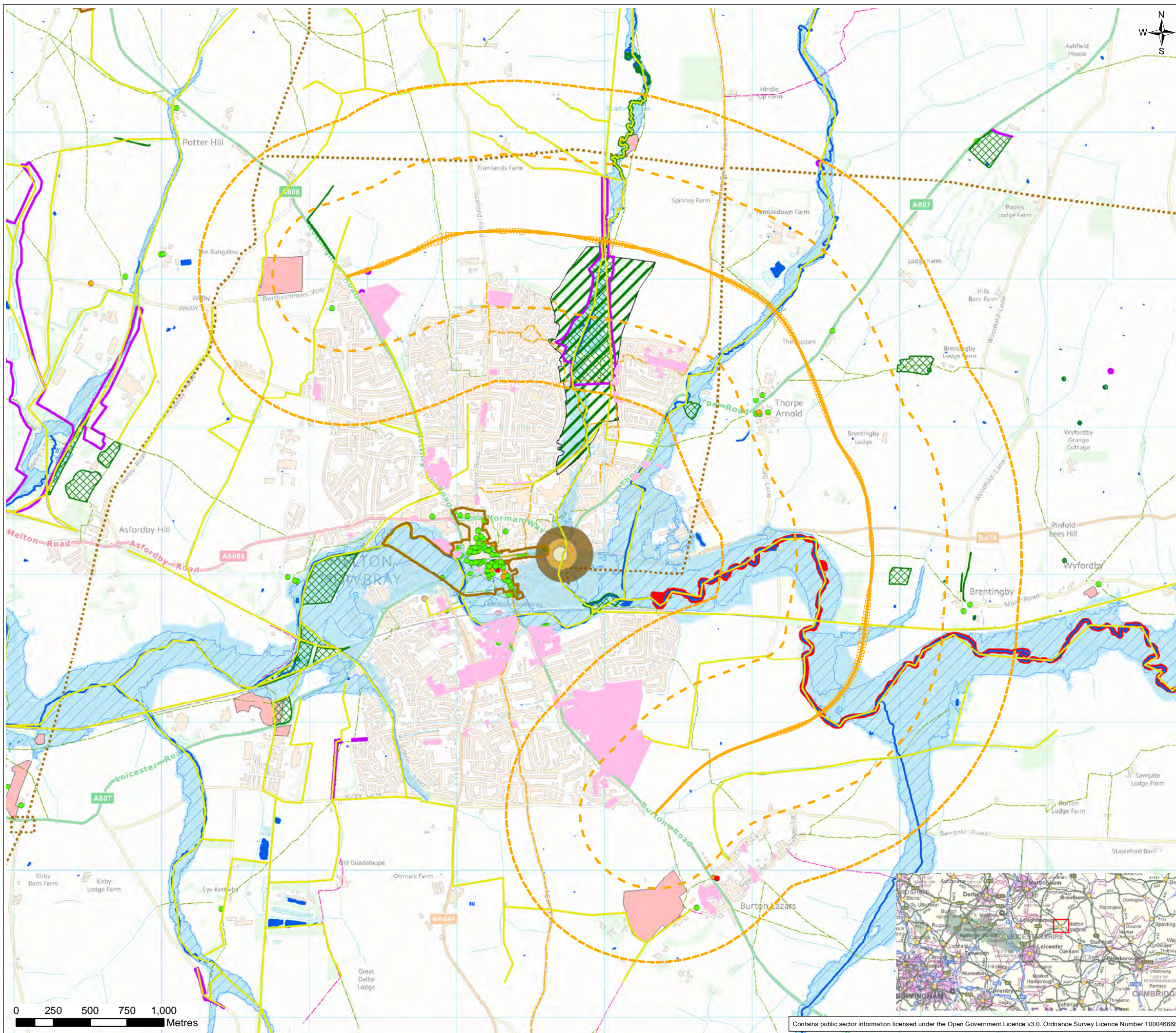
Scale @ A3
1:25,000
DO NOT SCALE

Jacobs No.
B221700

Client No.
Drawing number
B221700/ENV/002

Rev
0

This drawing is not to be used in whole in or part other than for the intended purpose and project as defined on this drawing. Refer to the contract for full terms and conditions.



- Legend:**
- Proposed bypass Option 2
 - Option 2 500m study area
 - Option 2 1km study area
 - Existing pipelines
 - Footpath
 - Bridleway
 - National Cycle Route
 - Country Park
 - Site of Special Scientific Interest (SSSI)
 - Local Wildlife Site (LWS)
 - Candidate/Potential Local Wildlife Site
 - Wildlife Corridor
 - Ancient Woodland
 - Conservation Area
 - Scheduled Monument
 - Grade I Listed Building
 - Grade II* Listed Building
 - Grade II Listed Building
 - Tree Preservation Order
 - Main Rivers
 - Waterbody
 - Flood Zone 3
 - Flood Zone 2
 - Source Protection Zone 1 (inner zone)
 - Source Protection Zone 2 (outer zone)
 - Source Protection Zone 3 (total catchment)

0	30/01/2017	Initial Issue	EW	SW	SW	RB
Rev.	Date	Purpose of revision	Drawn	Check'd	Rev'd	Appr'd



7th Floor, 2 Colmore Square, 38 Colmore Circus, Queensway, Birmingham, B4 6BN
 Tel: +44 (0)121 237 4000 Fax: +44.(0)121.237.4001
 www.jacobs.com

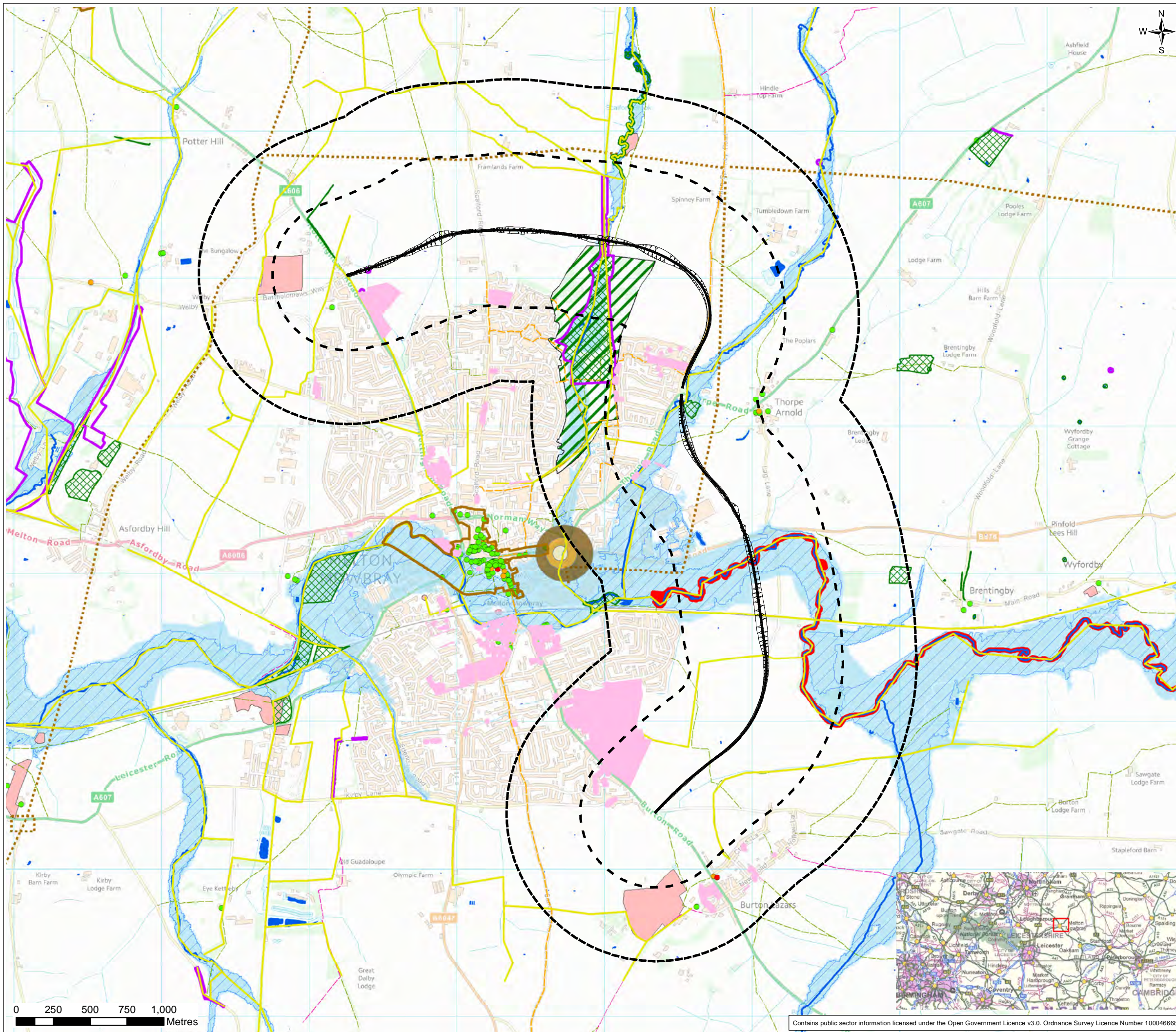
Client

Project
 MELTON MOWBRAY EASTERN DISTRIBUTOR ROAD

Drawing Title
**FIGURE 3
 ENVIRONMENTAL CONSTRAINTS
 OPTION 2**

Drawing Status	FINAL		
Scale @ A3	1:25,000	DO NOT SCALE	
Jacobs No.	B221700		
Client No.			
Drawing number	B221700/ENV/003	Rev	0

Contains public sector information licensed under the Open Government Licence v3.0. Ordnance Survey Licence Number 100046668



- Legend:**
- Proposed bypass Option 3
 - Option 3 500m study area
 - Option 3 1km study area
 - Existing pipelines
 - Footpath
 - Bridleway
 - National Cycle Route
 - Country Park
 - Site of Special Scientific Interest (SSSI)
 - Local Wildlife Site (LWS)
 - Candidate/Potential Local Wildlife Site
 - Wildlife Corridor
 - Ancient Woodland
 - Conservation Area
 - Scheduled Monument
 - Grade I Listed Building
 - Grade II* Listed Building
 - Grade II Listed Building
 - Tree Preservation Order
 - Main Rivers
 - Waterbody
 - Flood Zone 3
 - Flood Zone 2
 - Source Protection Zone 1 (inner zone)
 - Source Protection Zone 2 (outer zone)
 - Source Protection Zone 3 (total catchment)

0	30/01/2017	Initial Issue	EW	SW	SW	RB
Rev.	Date	Purpose of revision	Drawn	Check'd	Rev'd	Appr'd

JACOBS
 7th Floor, 2 Colmore Square, 38 Colmore Circus, Queensway, Birmingham, B4 6BN
 Tel: +44 (0)121 237 4000 Fax: +44.(0)121.237.4001
 www.jacobs.com

Client
 Leicestershire County Council

Project
 MELTON MOWBRAY EASTERN DISTRIBUTOR ROAD

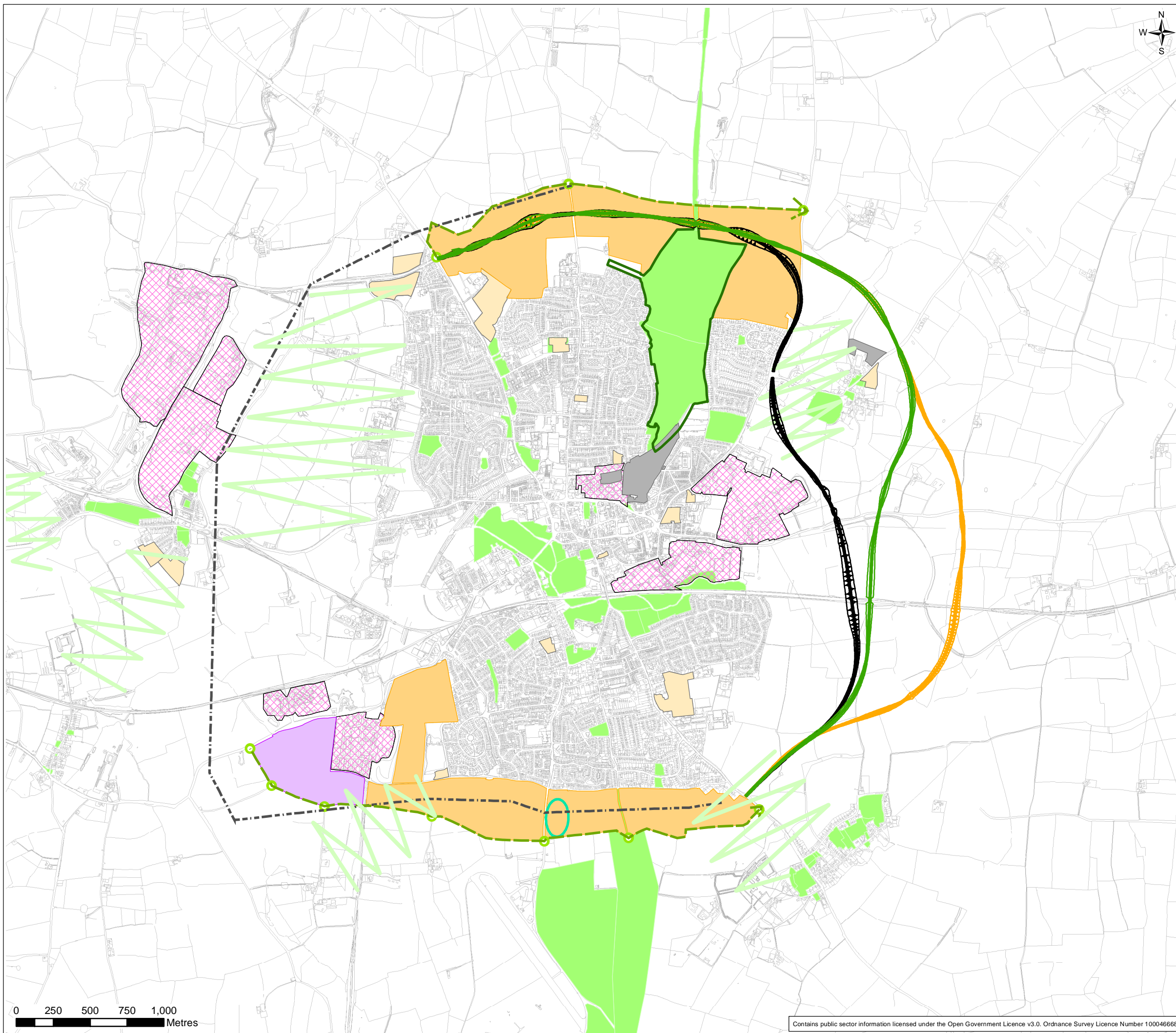
Drawing Title
**FIGURE 4
 ENVIRONMENTAL CONSTRAINTS
 OPTION 3**

Drawing Status	FINAL		
Scale @ A3	1:25,000	DO NOT SCALE	
Jacobs No.	B221700		
Client No.			
Drawing number	B221700/ENV/004	Rev	0



Contains public sector information licensed under the Open Government Licence v3.0. Ordnance Survey Licence Number 100046668

This drawing is not to be used in whole in or part other than for the intended purpose and project as defined on this drawing. Refer to the contract for full terms and conditions.



Legend:

- Proposed bypass Option 1
- Proposed bypass Option 2
- Proposed bypass Option 3
- Areas of Separation
- Indicative Distributor Road
- Indicative Western Bypass
- Housing Allocation
- Reserve Site (housing)
- Strategic Housing Allocation
- Employment Site
- Strategic Employment Allocation
- Local Green Space
- Melton Country Park
- Indicative Local Centre & Primary School



0	30/01/2017	Initial Issue	EW	SW	SW	RB
Rev.	Date	Purpose of revision	Drawn	Check'd	Rev'd	Appr'd



7th Floor, 2 Colmore Square, 38 Colmore Circus, Queensway, Birmingham, B4 6BN
 Tel: +44 (0)121 237 4000 Fax: +44 (0)121 237 4001
 www.jacobs.com

Client

Leicestershire County Council

Project
 MELTON MOWBRAY EASTERN DISTRIBUTOR ROAD

Drawing Title
**FIGURE 5
 MELTON BOROUGH COUNCIL
 ALLOCATIONS PLAN**

Drawing Status: FINAL

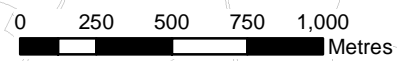
Scale @ A3: 1:25,000 DO NOT SCALE

Jacobs No.: B221700

Client No.:

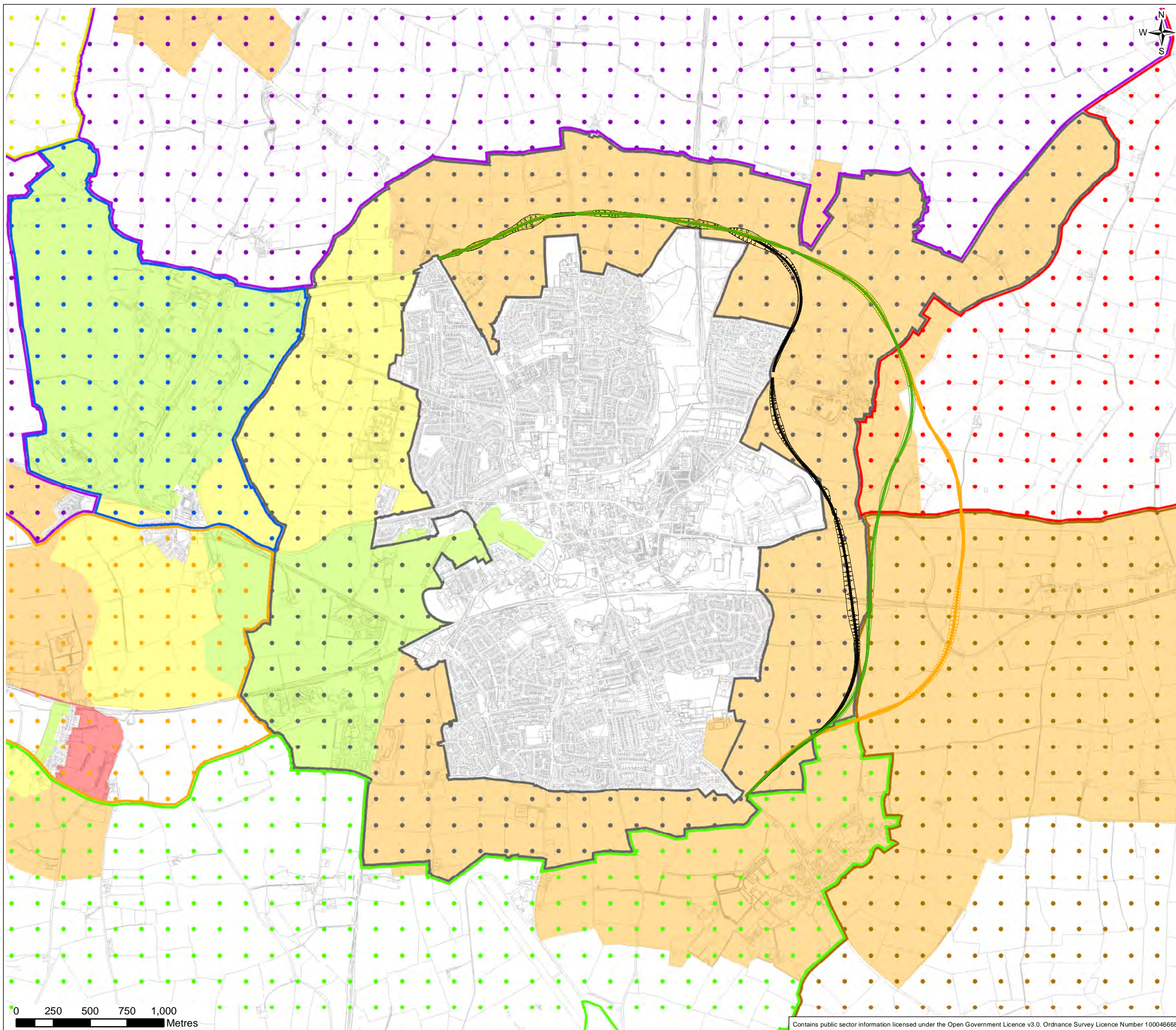
Drawing number: B221700/ENV/005

Rev: 0



Contains public sector information licensed under the Open Government Licence v3.0. Ordnance Survey Licence Number 100046668

This drawing is not to be used in whole in or part other than for the intended purpose and project as defined on this drawing. Refer to the contract for full terms and conditions.



Legend:

- Proposed bypass Option 1
- Proposed bypass Option 2
- Proposed bypass Option 3

Landscape Character Assessment Units

- LCU10
- LCU13
- LCU14
- LCU15
- LCU3
- LCU5
- LCU8
- LCU9

Landscape Character Zones

- High
- Medium/High
- Medium
- Medium/Low



0	30/01/2017	Initial Issue	EW	SW	SW	RB
Rev.	Date	Purpose of revision	Drawn	Check'd	Rev'd	Appr'd



7th Floor, 2 Colmore Square, 38 Colmore Circus, Queensway, Birmingham, B4 6BN
 Tel: +44 (0)121 237 4000 Fax: +44.(0)121.237.4001
 www.jacobs.com

Client

Project
 MELTON MOWBRAY EASTERN DISTRIBUTOR ROAD

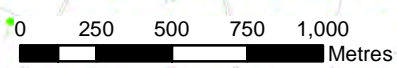
Drawing Title
**FIGURE 6
 MELTON BOROUGH COUNCIL
 LANDSCAPE CHARACTER**

Drawing Status: FINAL

Scale @ A3: 1:25,000 DO NOT SCALE

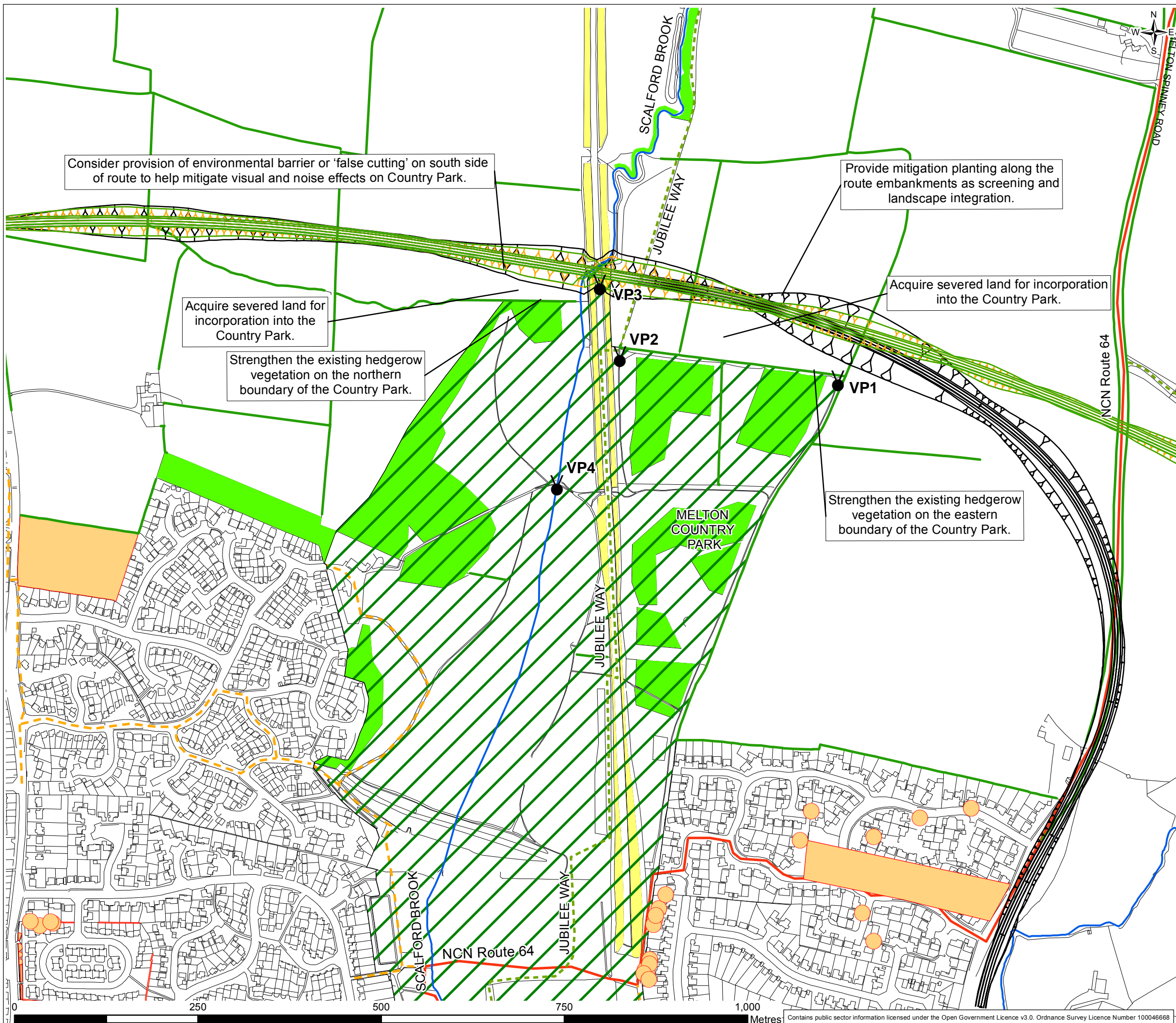
Jacobs No.: B221700

Drawing number: B2271700/ENV/006 Rev: 0



Contains public sector information licensed under the Open Government Licence v3.0. Ordnance Survey Licence Number 100046668

This drawing is not to be used in whole in or part other than for the intended purpose and project as defined on this drawing. Refer to the contract for full terms and conditions.

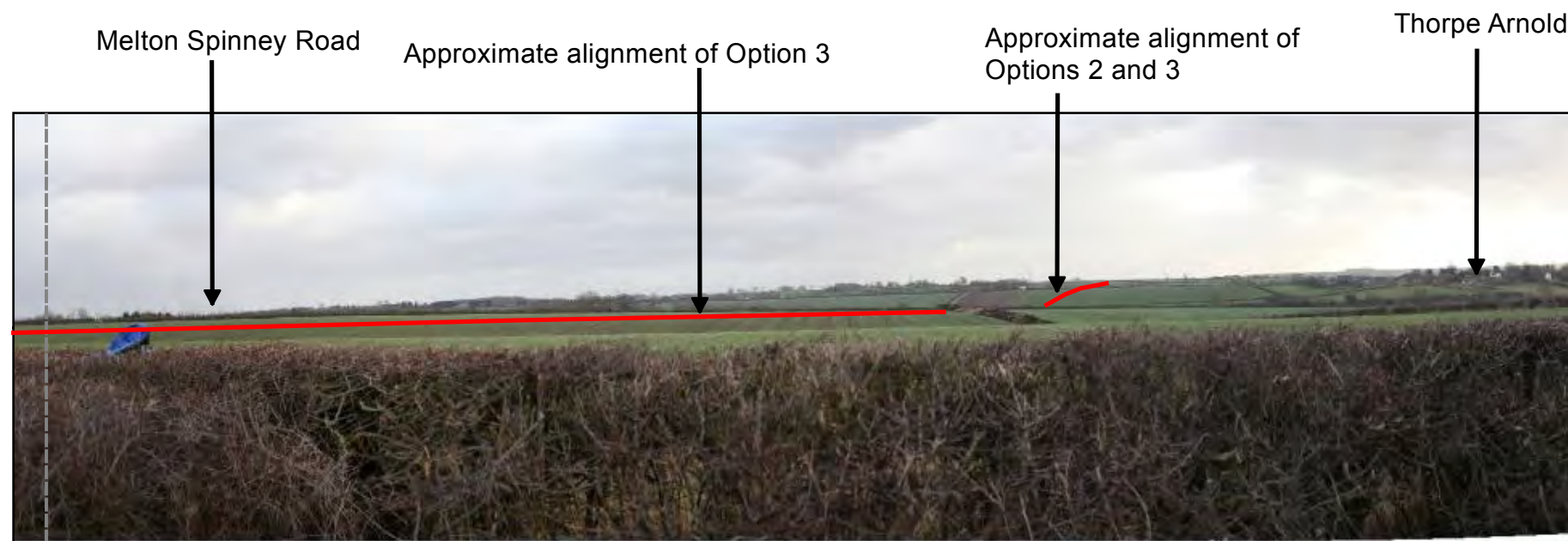
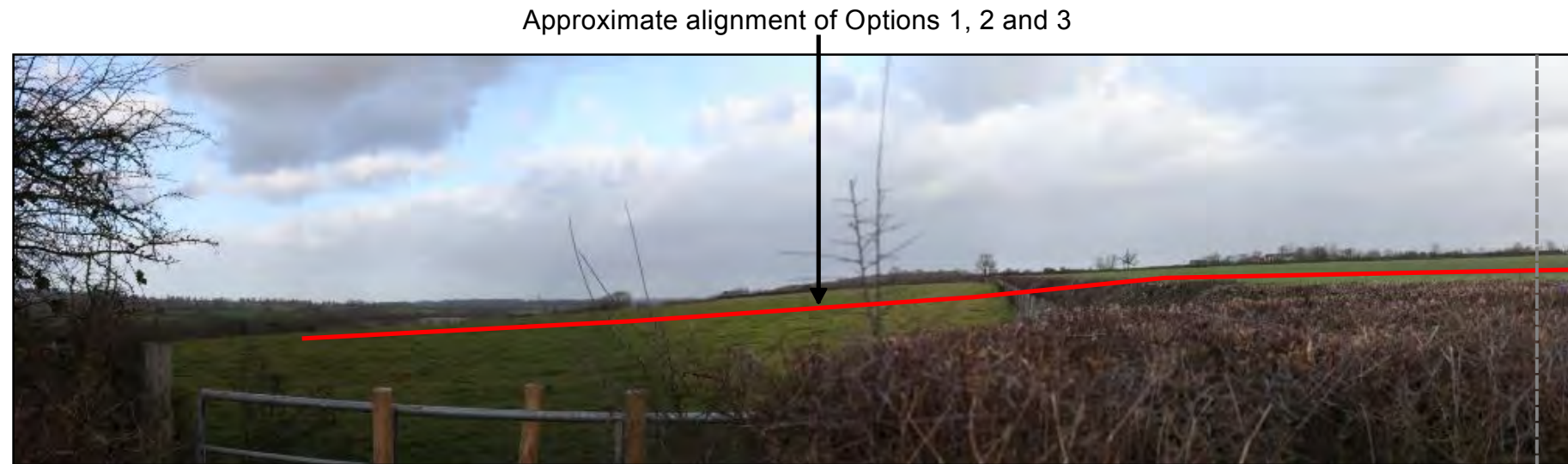


- Legend:**
- Proposed bypass Option 1
 - Proposed bypass Option 2
 - Proposed bypass Option 3
 - - - Jubilee Way Long Distance footpath
 - National Cycle Network, Route 64
 - - - Local Cycle Network
 - Viewpoint location
 - Melton Country Park
 - Scalford Brook
 - Existing hedgerows
 - Tree Preservation Order
 - Principal area of existing trees/woodland (Google Earth)
 - Existing railway embankment vegetation

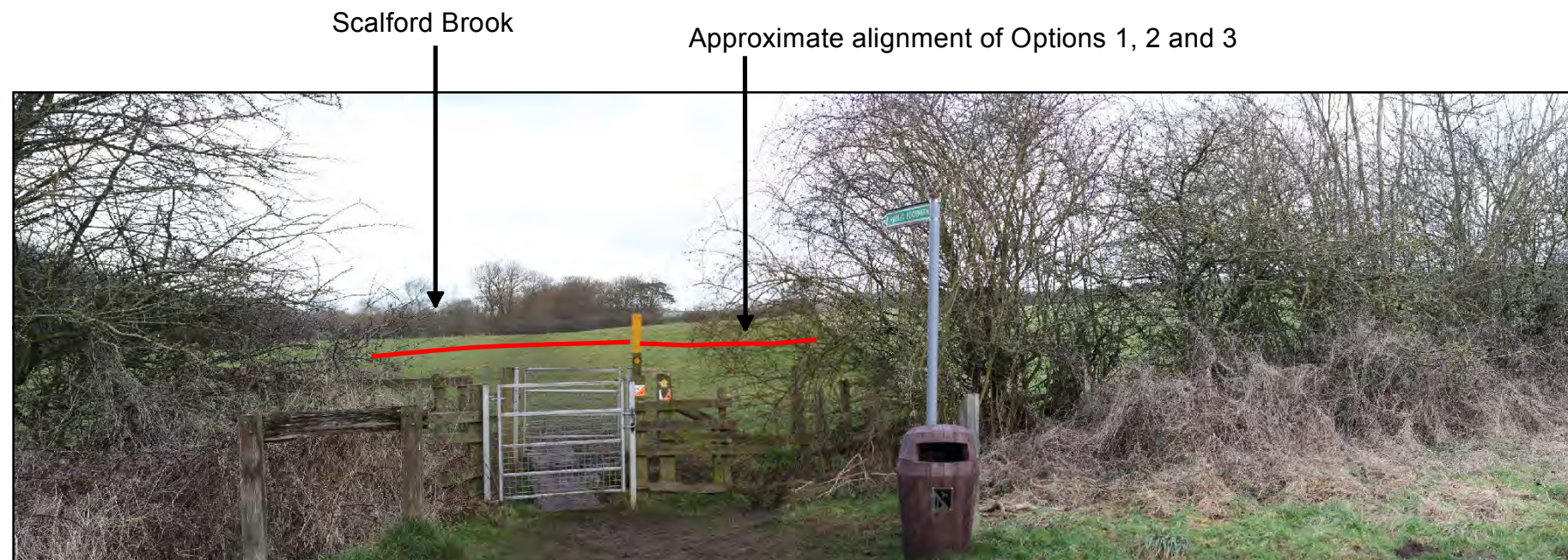


0	30/01/2017	Initial Issue	EW	SW	SW	RB
Rev.	Date	Purpose of revision	Drawn	Check'd	Rev'd	Appr'd
<p>7th Floor, 2 Colmore Square, 38 Colmore Circus, Queensway, Birmingham, B4 6BN Tel: +44 (0)121 237 4000 Fax: +44 (0)121 237 4001 www.jacobs.com</p>						
Client						
<p>Leicestershire County Council</p>						
Project						
MELTON MOWBRAY EASTERN DISTRIBUTOR ROAD						
Drawing Title						
FIGURE 7 LANDSCAPE CONSTRAINTS, OPPORTUNITIES AND PANORAMA VIEWPOINT LOCATIONS						
Drawing Status						
FINAL						
Scale @ A3		1:5,000		DO NOT SCALE		
Jacobs No.		B221700				
Client No.						
Drawing number						Rev
B221700/LAND/007						0

Viewpoint 1 – View north and east from an internal footpath on the north-east corner of the Country Park.



Viewpoint 2 – View north from the Jubilee Way that runs through the Country Park and continues north along Scaford Brook.



Legend:

Refer to FIGURE 7 LANDSCAPE CONSTRAINTS, OPPORTUNITIES AND PANORAMA VIEWPOINT LOCATIONS for viewpoint locations



Rev.	Date	Purpose of revision	EW	SW	SW	RB
0	30/01/2017	Initial Issue				

JACOBS

7th Floor, 2 Colmore Square, 38 Colmore Circus, Queensway, Birmingham, B4 6BN
Tel: +44 (0)121 237 4000 Fax: +44 (0)121 237 4001
www.jacobs.com

Client
Leicestershire County Council

Project
MELTON MOWBRAY EASTERN DISTRIBUTOR ROAD

Drawing Title
**FIGURE 8
PANORAMA VIEWPOINTS
SHEET 1**

Drawing Status
FINAL

Scale @ A3
NOT TO SCALE DO NOT SCALE

Jacobs No.
B221700

Client No.

Drawing number
B221700/LAND/008/1

Rev
0

This drawing is not to be used in whole in or part other than for the intended purpose and project as defined on this drawing. Refer to the contract for full terms and conditions.

Viewpoint 3 – View north from an informal route on the embankment of the dismantled railway.

Approximate alignment of Options 1, 2 and 3



Scaford Brook Approximate alignment of Options 1, 2 and 3



Viewpoint 4 – View north from within an internal path, by the boardwalk on the southern edge of the northern most pond.

Approximate alignment of Options 1, 2 and 3

Scaford Brook

Jubilee Way on dismantled railway embankment



Legend:

Refer to FIGURE 7 LANDSCAPE CONSTRAINTS, OPPORTUNITIES AND PANORAMA VIEWPOINT LOCATIONS for viewpoint locations



0	30/01/2017	Initial Issue	EW	SW	SW	RB
Rev.	Date	Purpose of revision	Drawn	Check'd	Rev'd	Appr'd

JACOBS

7th Floor, 2 Colmore Square, 38 Colmore Circus, Queensway, Birmingham, B4 6BN
Tel: +44 (0)121 237 4000 Fax: +44.(0)121.237.4001
www.jacobs.com

Client
Leicestershire County Council

Project
MELTON MOWBRAY EASTERN DISTRIBUTOR ROAD

Drawing Title
**FIGURE 8
PANORAMA VIEWPOINTS
SHEET 2**

Drawing Status
FINAL

Scale @ A3
NOT TO SCALE DO NOT SCALE

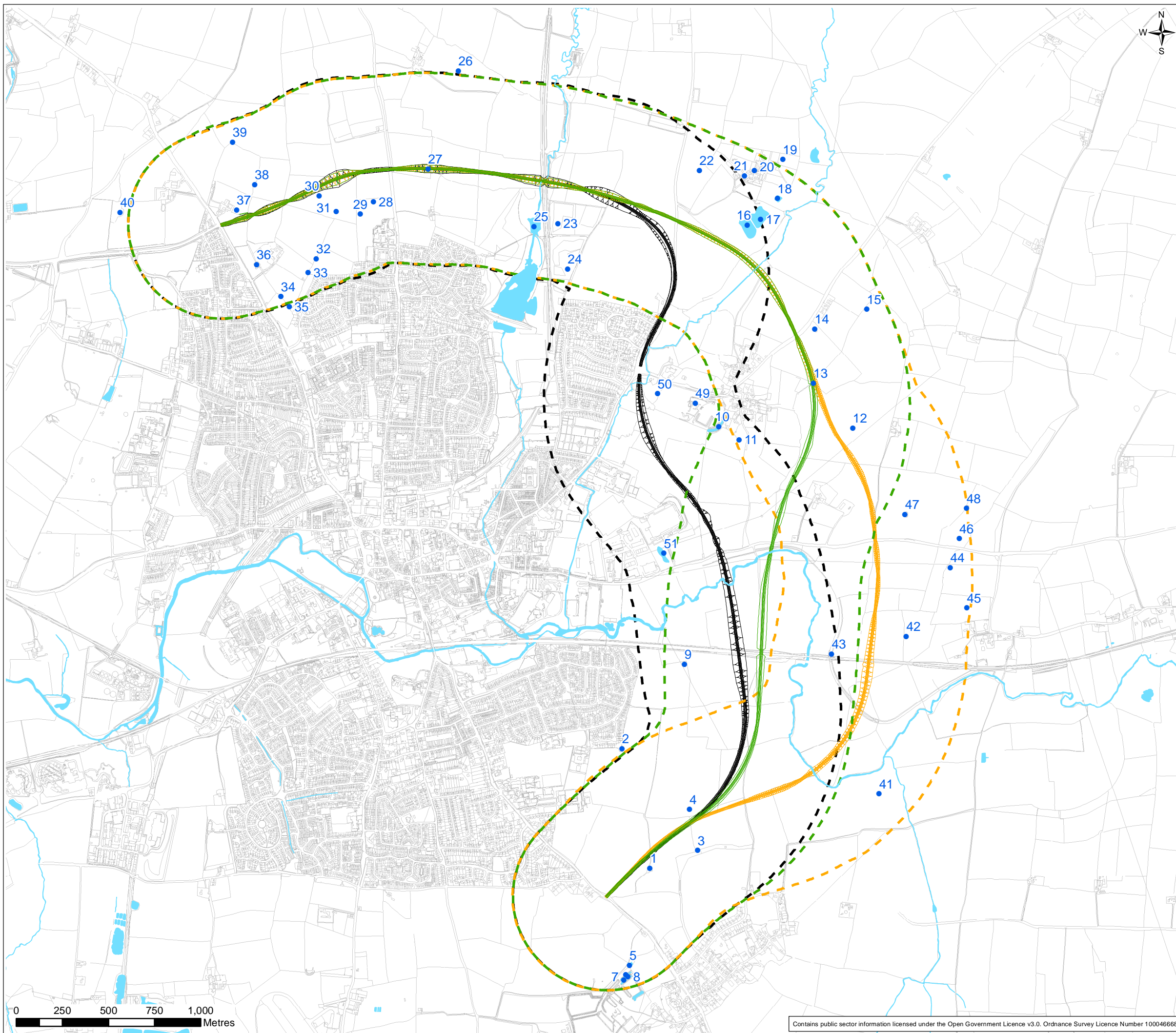
Jacobs No.
B221700

Client No.

Drawing number
B221700/LAND/008/2

Rev
0

This drawing is not to be used in whole in or part other than for the intended purpose and project as defined on this drawing. Refer to the contract for full terms and conditions.



Legend:

- Proposed bypass Option 1
- - - Option 1 500m buffer
- Proposed bypass Option 2
- - - Option 2 500m buffer
- Proposed bypass Option 3
- - - Option 3 500m study area
- Ponds



0	30/01/2017	Initial Issue	EW	CG	VH	SW
Rev.	Date	Purpose of revision	Drawn	Check'd	Rev'd	Appr'd



7th Floor, 2 Colmore Square, 38 Colmore Circus, Queensway, Birmingham, B4 6BN
 Tel: +44 (0)121 237 4000 Fax: +44.(0)121.237.4001
 www.jacobs.com

Client **Leicestershire County Council**

Project **MELTON MOWBRAY EASTERN DISTRIBUTOR ROAD**

Drawing Title **FIGURE 9
PONDS WITHIN 500M
ALL OPTIONS**

Drawing Status **FINAL**

Scale @ A3 **1:20,000** **DO NOT SCALE**

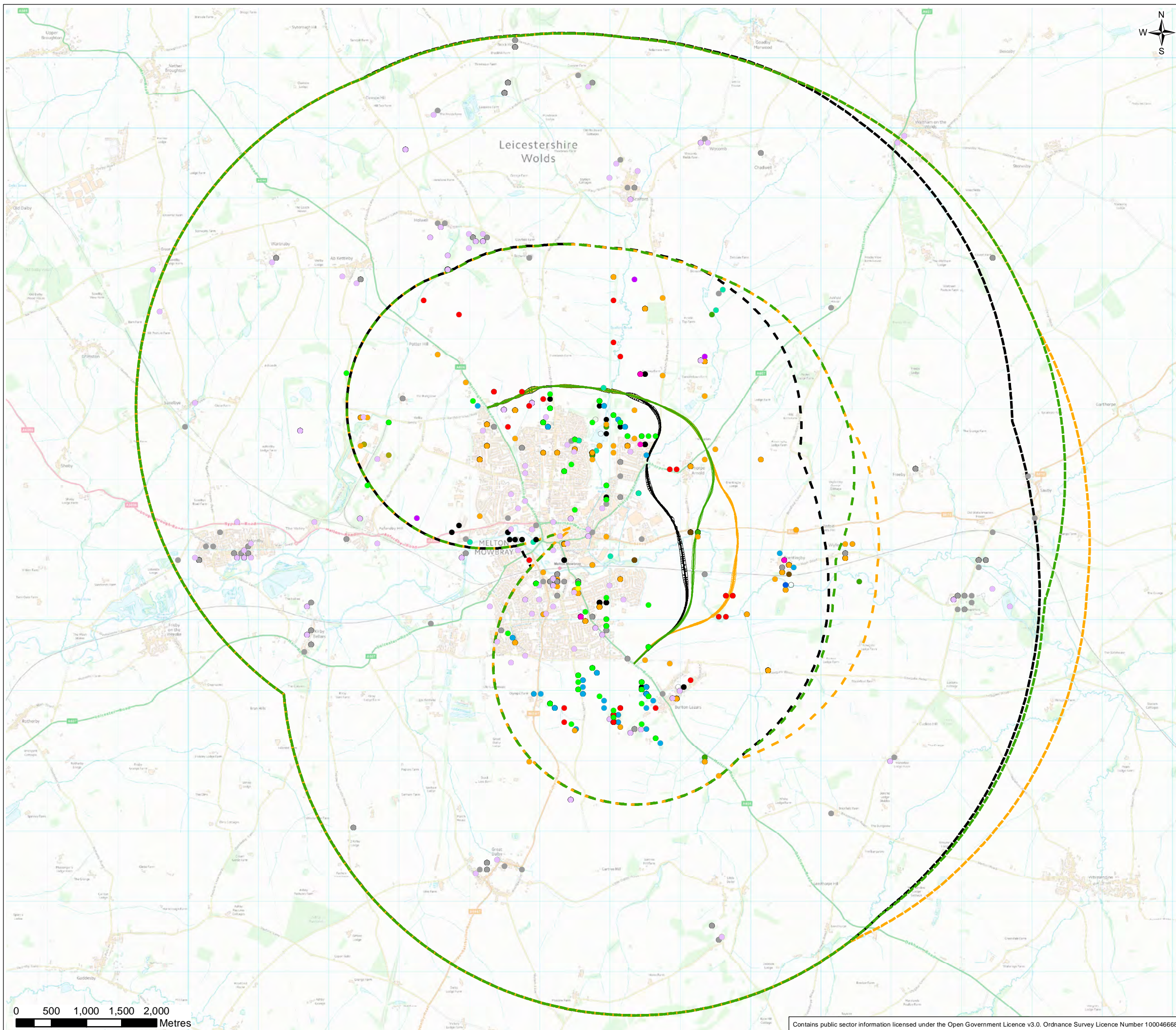
Jacobs No. **B221700**

Client No. **B221700/ECO/009** Rev **0**



Contains public sector information licensed under the Open Government Licence v3.0. Ordnance Survey Licence Number 100046668

This drawing is not to be used in whole in or part other than for the intended purpose and project as defined on this drawing. Refer to the contract for full terms and conditions.



- Legend:**
- Proposed bypass Option 1
 - - - Option 1 2km buffer
 - - - - - Option 1 5km buffer
 - Proposed bypass Option 2
 - - - Option 2 2km buffer
 - - - - - Option 2 5km buffer
 - Proposed bypass Option 3
 - - - Option 3 2km buffer
 - - - - - Option 3 5km buffer
- Species records**
- Amphibian (excluding Great Crested Newt)
 - Badger sett
 - Barn owl - confirmed breeding
 - Bat
 - Bat - known roost
 - Bird
 - Brown hare
 - Great Crested Newt
 - Hedgehog
 - Invertebrate
 - Otter
 - Plant
 - Reptile
 - Water vole
 - White-clawed crayfish



0	30/01/2017	Initial Issue	EW	CG	VH	SW
Rev.	Date	Purpose of revision	Drawn	Check'd	Rev'd	Appr'd



7th Floor, 2 Colmore Square, 38 Colmore Circus, Queensway, Birmingham, B4 6BN
 Tel: +44 (0)121 237 4000 Fax: +44(0)121.237.4001
 www.jacobs.com



Client
MELTON MOWBRAY EASTERN DISTRIBUTOR ROAD

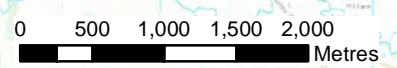
Drawing Title
**FIGURE 10
 PROTECTED SPECIES
 ALL OPTIONS**

Drawing Status: FINAL

Scale @ A3: 1:52,500 DO NOT SCALE

Jacobs No.: B221700

Drawing number: B221700/ECO/010 Rev: 0



Contains public sector information licensed under the Open Government Licence v3.0. Ordnance Survey Licence Number 100046668

This drawing is not to be used in whole in or part other than for the intended purpose and project as defined on this drawing. Refer to the contract for full terms and conditions.