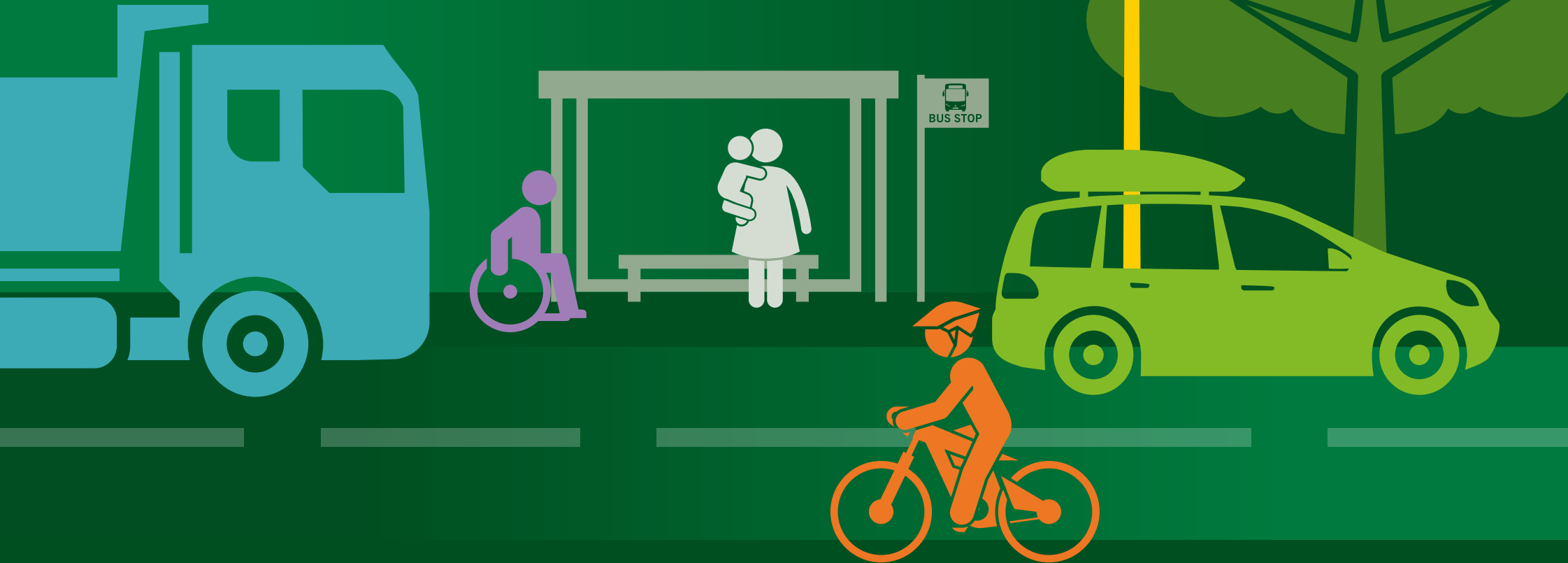


A Local Transport Plan for Leicestershire

Core Document Summary



Introduction

Our transport network has a key role in enabling movement across the county, The Local Transport Plan (LTP) is a requirement of the Local Transport Act 2008, and they key mechanism to deliver integrated transport at a local level. It helps to promote transport as an enabler to existing and future challenges, explains how transport impacts local communities and put in place plans for transport solutions to help people and goods move around.

Leicestershire's LTP3 is coming to an end in 2026, and no longer accords which national planning, transport, or environmental policy. A new LTP, known as LTP4, will allow the council to identify how they will deliver transport solutions and innovation which seek to improve local communities' health and wellbeing, enable economic growth and prosperity, and protecting the environment.



The Development of the Local Transport Plan

The LTP will be developed in three phrases and will cover the period between 2025 and 2040.

Phase 1: Up to 2030

Phase 1 comprises the LTP4 Core Document which will identify the key challenges faced across the county in terms of transport.

It will set out the strategic vision for transport, the core themes and policies and how these will be implemented. The LTP4 Core Document will provide the strategic case and narrative to aid the development and implementation of the programme for the LTF, and other funding streams, delivering transport solutions across the county.

Phase 2: Up to 2040

Phase 2 will be the development and implementation of a series of focused strategies, including freight and logistics and aviation and the development and implementation of a County Wide Strategic Transport Investment Plan and locally focused Multi-Modal Area Investment Plans (MMAIPS).

These plans will be developed with communities and partners setting out the transport solutions and the programme for delivery and implementation over a five-year period, which meet their needs and requirements. As well as supporting the delivery of new homes and employment opportunities across the county.

Phase 3: Up to 2050

Phase 3 will set out the monitoring and review processes and progress based on the LTP to identify success or where greater focus is required.

It will also set the Council's approach to a post-2050 vision for the future and 'horizon scanning' to ensure that the Council is proactive and can adapt the LTP and transport solutions to accommodate travel behaviour change, innovation, and changes to national policy and guidance.

As we look to the future, in 2043 we expect these are the key challenges which we will need to address through LTP4

Leicestershire's population to grow by 23.3%



The largest population group is expected to be those aged 65 and over

29% increase in vehicle kilometres travelled across the county



52.1% increase in residents living with dementia between 2023 and 2040



A need to accommodate additional 120,000 homes

5.5% increase in carbon emissions impacting on air quality and the health of our communities

26% increase in a demand for rail travel



A nine per cent increase in the number of people suffering from common mental disorders by 2040



Seven per cent reduction in average speeds across the network

Adapting to climate change and extreme weather events to enable reliable and resilient transport network



Only a 1.2% increase in travel by active modes on existing low level of usage



30% increase in freight demand across the county



69% increase in delay observed across the network



Between 2023 and 2040 the total population aged 18 and over predicted to have diabetes will increase by 22.5%

Our Vision for Transport Across Leicestershire

“Delivering a safe and connected transport network which is resilient and well-maintained to support the ambitions and health of our communities, deliver economic prosperity whilst safeguarding our environment.”



The 5 Core Themes

The delivery of the vision for transport will be achieved through five core themes and the implementation of six core policies.



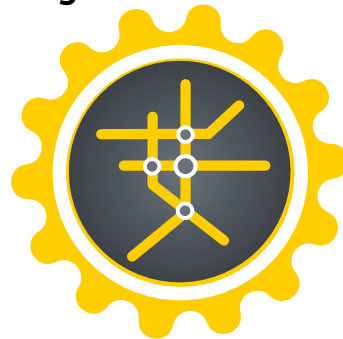
**Enabling Health
And Wellbeing**



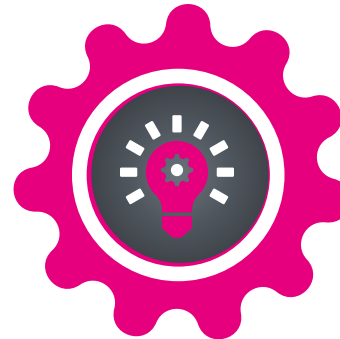
**Protecting The
Environment**



**Delivering
Economic Growth**



**Enhancing Our Transport
Network's Resilience**



Embracing Innovation

The 6 Core Policies



Enabling Health
And Wellbeing



Protecting The
Environment



Delivering
Economic
Growth



Enhancing Our
Transport Network's
Resilience



Embracing
Innovation

Core Policy 1: Delivering the Vision

Ensure that all our transport solutions accord with the five core themes to deliver our vision for transport with regard to government policy for the benefit of our communities.

Core Policy 2: Managing Demand

Delivering a safe, accessible, connected and resilient transport network that is well managed and enables communities to access jobs, education and services. The network will also enable efficient movement and delivery of goods to support the local, regional and international markets.

Core Policy 3: Enabling Travel Choice

Enabling travel choice in all of our communities that reflects their unique needs which ensures their safety whilst promoting health & wellbeing and protecting the environment.

Core Policy 4: Delivering Solutions

Work collaboratively to identify and develop innovative transport related solutions which provide good value for money and enable travel choice, improve our transport network users' experiences, and benefit the environment and the health and wellbeing of our communities.

Core Policy 5: Embracing Innovation

Embrace innovation and collaboration, which enables us to decarbonise transport and adapt to climate change to ensure a resilient transport network, while benefiting the environment and promoting the health and wellbeing of our communities.

Core Policy 6: Evaluating Progress

Utilise data, monitoring and evaluation of our transport solutions to enable evidence-based programmes, provide a flexible approach to policy development, technology, and innovation to address changes and challenges which impact our communities.



